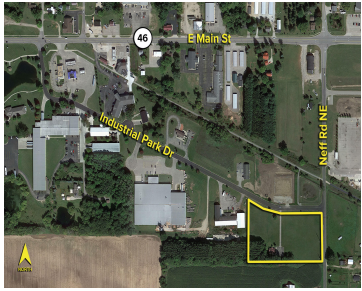


1398, INDUSTRIAL PARK, EDMORE, MI, 48829

<https://tuckerbenner.com>



Located on over 5 acres in Village of Edmore in the Industrial District. Village of Edmore is flexible with use and will allow for a variety of additional users. Site open for potential grow facility. Basement has full kitchen and could be suitable for live/work space.

- 2 baths
- Industrial
- Commercial Sale
- Active



Basics

Category: Commercial Sale

Status: Active

Lot size: 5.18 sq ft

Bathrooms Full: 2

Business Type: Distribution, Retail

Type: Industrial

Bathrooms: 2 baths

Year built: 2002

Lot Size Acres: 5.18 acres

County: Montcalm



Call us now

Phone: (231)730-8781

Email: tuckerbennerteam@gmail.com

Address: 2747 Lakeshore Drive, Twin Lake, MI 49457



Building Details

Building Area Total: 1300 sq ft

Construction Materials: Brick

Heating: Forced Air

Roof: Metal

Basement: Full

Number Of Units Total: 1

Sewer: Septic System

StoriesTotal: 1

Number Of Buildings: 1

Amenities & Features

Inclusions: Non-Applicable **Utilities:** Water Available, Natural Gas Available, Electricity Available, Natural Gas Connected, Electricity Connected

WaterSource: Public

Cooling: Central Air

Fees & Taxes

Tax Assessed Value: \$67,700

Tax Year: 2022

Tax Annual Amount: \$3,541

School Information

High School District: Montcalm

Miscellaneous

CrossStreet: Main & Nerf

Listing Terms: Conventional, Cash



Call us now

Phone: (231)730-8781

Email: tuckerbennerteam@gmail.com

Address: 2747 Lakeshore Drive, Twin Lake, MI 49457

