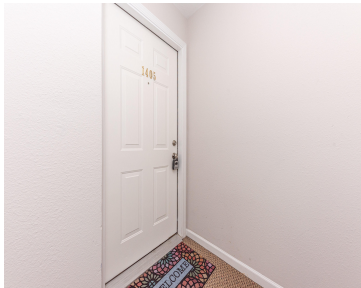
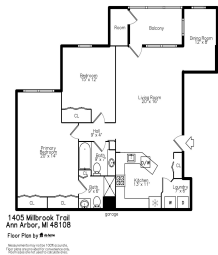


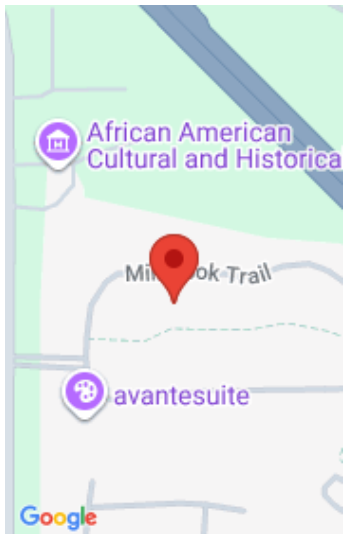
# 1405, MILLBROOK, ANN ARBOR, MI, 48108

https://tuckerbenner.com



This Heatherwood condo offers comfortable, move-in-ready living with 2 bedrooms, 2 baths, and an additional flex space perfect for an office or guest area. The open floor plan features vaulted ceilings and warm oak cabinets, with the convenience of in-unit laundry. A newly screened porch provides a peaceful view of the surrounding green space. Recent [...]

- 2 beds
- 2 baths
- Condominium
- Residential
- Active
- 1212 sq ft



**Call us now**



Phone: (231)730-8781

Email: tuckerbennerteam@gmail.com

Address: 2747 Lakeshore Drive, Twin Lake, MI 49457



# Basics

**Category:** Residential  
**Status:** Active  
**Bathrooms:** 2 baths  
**Lot size:** 0.03 sq ft  
**Subdivision Name:** Heatherwood  
**Lot Size Acres:** 0.03 acres  
**County:** Washtenaw

**Type:** Condominium  
**Bedrooms:** 2 beds  
**Area:** 1212 sq ft  
**Year built:** 1998  
**Bathrooms Full:** 2  
**Rooms Total:** 8

# Building Details

**Building Area Total:** 1212 sq ft  
**Architectural Style:** Ranch  
**Heating:** Forced Air  
**Roof:** Asphalt, Shingle

**Construction Materials:** Vinyl Siding  
**Sewer:** Public  
**Stories:** 1  
**Basement:** Slab

# Amenities & Features

**Laundry Features:** In Hall, Laundry Room  
**Flooring:** Carpet, Laminate  
  
**Association Amenities:** Clubhouse, Pets Allowed, Pool  
**Garage Spaces:** 1  
**Appliances:** Dishwasher, Disposal, Dryer, Oven, Range, Refrigerator, Washer  
**Lot Features:** Level, Sidewalk  
  
**Patio And Porch Features:** Covered, Screened  
**Cooling:** Central Air

**Pool Features:** In Ground  
**Utilities:** Natural Gas Connected, Cable Connected, Storm Sewer  
**Parking Features:** Garage Door Opener, Detached  
**WaterSource:** Public  
**Interior Features:** Ceiling Fan(s), Garage Door Opener  
**Window Features:** Screens, Window Treatments  
**Exterior Features:** Balcony

Call us now

---

# Fees & Taxes

**Tax Assessed Value:** \$109,461    **Association Fee Frequency:** Monthly  
**Association Fee:** \$350    **Tax Year:** 2025  
**Tax Annual Amount:** \$4,440    **Association Fee Includes:** Snow Removal, Lawn/Yard Care

---

# School Information

**High School District:** Ann Arbor    **HighSchool:** Pioneer High School  
**Middle Or Junior School:** Tappan Middle School    **Elementary School:** Pattengill Elementary School

---

# Miscellaneous

**Road Surface Type:** Paved    **CrossStreet:** Lohr Rd & Oak Valley  
**Listing Terms:** Cash, FHA, VA Loan, Conventional

**Call us now**