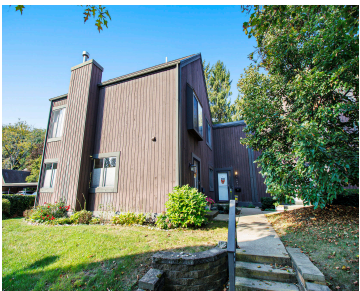
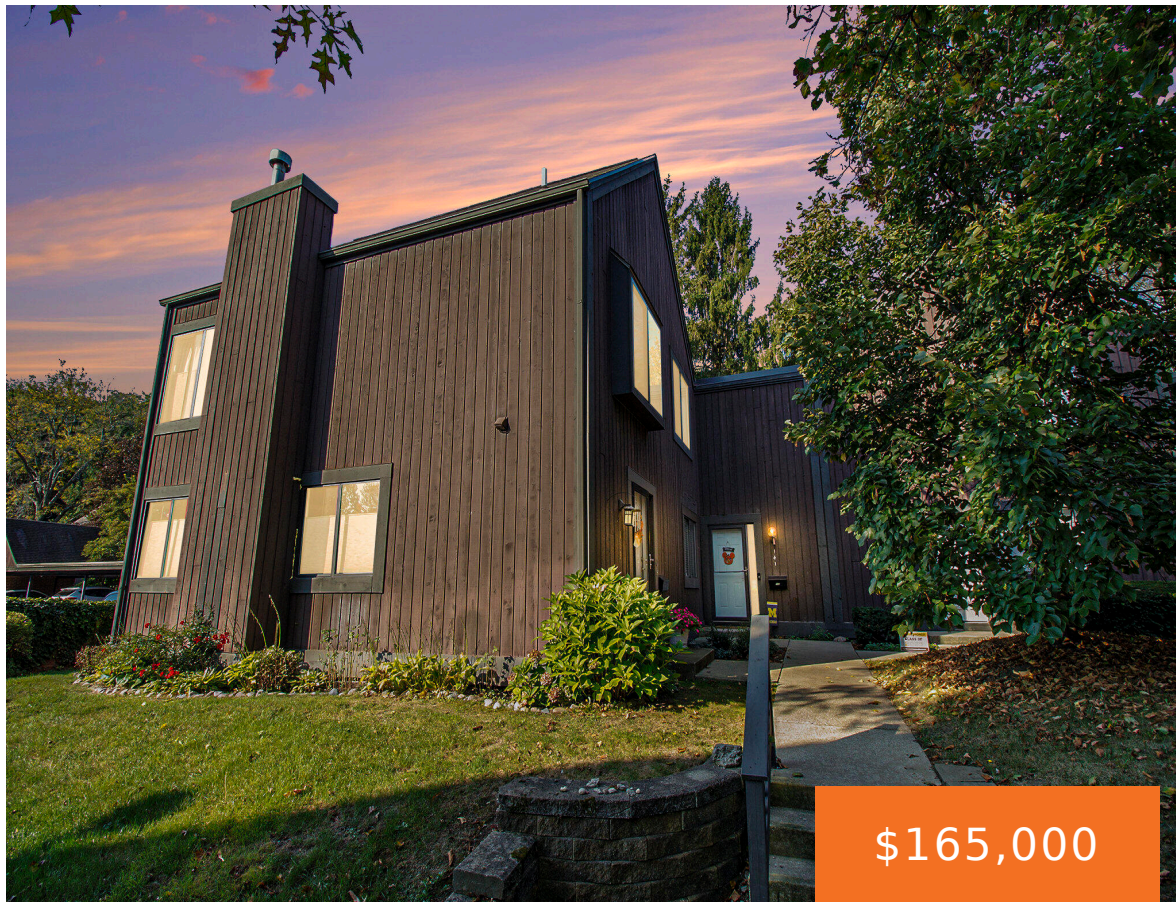


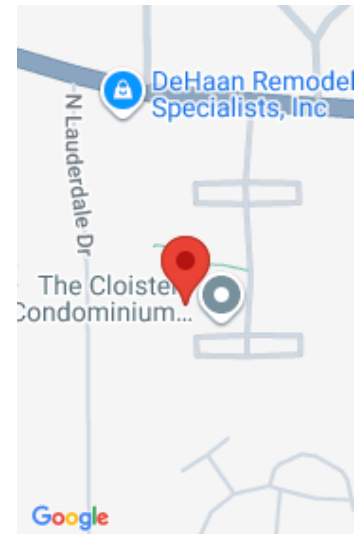
141, SELKIRK, KALAMAZOO, MI, 49006

<https://tuckerbenner.com>



Stylish, Updated, and Ideally Located! Discover the perfect blend of comfort and convenience in this beautifully updated 2 bedroom, 2 1/2 bath condo. Situated just minutes from WMU, Kalamazoo College, and downtown, this home offers effortless access to everything the city has to offer—whether you’re studying, working, or exploring. A private carport provides easy, covered [...]

- 2 beds
- 3 baths
- Condominium
- Residential
- Active
- 1154 sq ft



Basics

Category: Residential

Status: Active

Bathrooms: 3 baths

Lot size: 305 sq ft

Subdivision Name: The Cloisters

Lot Size Acres: 0.01 acres

County: Kalamazoo

Type: Condominium

Bedrooms: 2 beds

Area: 1154 sq ft

Year built: 1972

Bathrooms Full: 2

Rooms Total: 7

Bathrooms Half: 1

Building Details

Building Area Total: 1154 sq ft

Architectural Style: Traditional

Heating: Forced Air

Roof: Composition

Construction Materials: Wood Siding

Sewer: Public

Stories: 2

Basement: Full

Amenities & Features

Laundry Features: In Basement

Flooring: Ceramic Tile, Laminate

Association Amenities: Clubhouse, Pets Allowed, Pool

Fireplace Features: Gas Log, Living Room

Appliances: Humidifier, Dishwasher, Dryer, Microwave, Oven, Range, Refrigerator, Washer

Window Features: Window Treatments

Fireplaces Total: 1

Pool Features: In Ground

Utilities: Natural Gas Available, Electricity Available, Natural Gas Connected

Parking Features: Carport

WaterSource: Public

Interior Features: Ceiling Fan(s), Eat-in Kitchen, Pantry

Patio And Porch Features: Patio

Cooling: Central Air

Fees & Taxes

Call us now



Tax Assessed Value: \$81,964

Association Fee: \$407

Tax Annual Amount: \$4,294.20

Association Fee Frequency: Monthly

Tax Year: 2024

Association Fee Includes: Water, Trash, Snow Removal,
Sewer, Lawn/Yard Care

School Information

High School District: Kalamazoo

Middle Or Junior School: Linden Grove Middle School

HighSchool: Kalamazoo Central High School

Elementary School: Northglade Montessori Magnet School

Miscellaneous

Road Surface Type: Paved

Listing Terms: Cash, FHA, MSHDA, Conventional

CrossStreet: W Main & Braemar Ln

Call us now



Phone: (231)730-8781

Email: tuckerbennerteam@gmail.com

Address: 2747 Lakeshore Drive, Twin Lake, MI 49457

