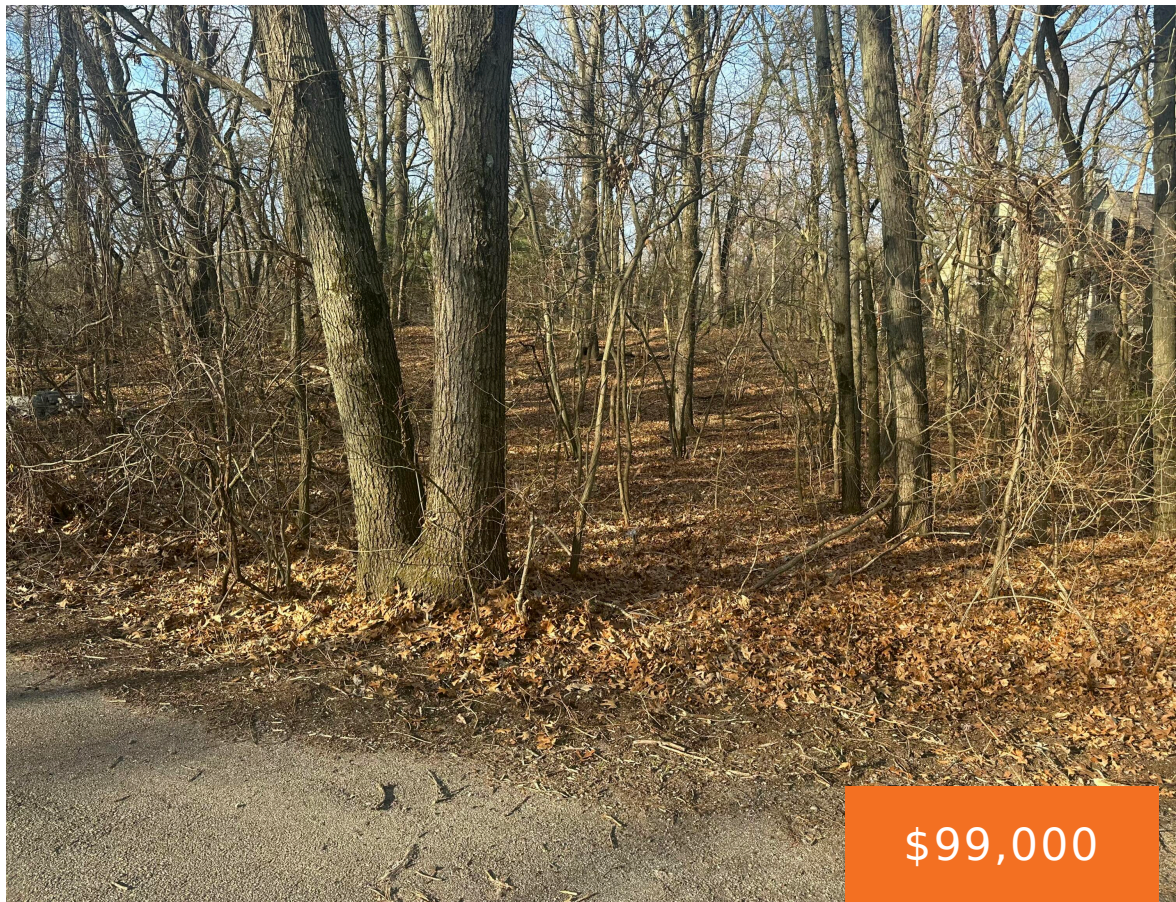


# 14386, WOLF, NEW BUFFALO, MI, 49117

<https://tuckerbenner.com>



Gorgeous and sought after area, surrounded by the lush golf courses of Grand Beach. Very attractive, well established neighborhood, with beach access. This, quiet buildable lot is located on the end of the cul-de-sac. A lusciously, wooded area that abounds with countless mature trees. Mere minutes away from breweries, wineries, dispensaries, and beautiful downtown New [...]

- 0 baths
- Lot
- Land
- Active



## Basics

<b>Category:</b> Land	<b>Type:</b> Lot
<b>Status:</b> Active	<b>Bathrooms:</b> 0 baths
<b>Lot size:</b> 0.57 sq ft	<b>Subdivision Name:</b> Wolfe Woods
<b>Lot Size Acres:</b> 0.57 acres	<b>County:</b> Berrien

### Call us now

## Amenities & Features

**Utilities:** Natural Gas Available, Electricity Available, None

**Waterfront Features:** Lake

**Association Amenities:** Beach Area

**Lot Features:** High Bank, Buildable, Cul-De-Sac, Wooded

## Fees & Taxes

**Tax Assessed Value:** \$28,883

**Tax Year:** 2024

**Association Fee Includes:** Other

**Association Fee Frequency:** Quarterly

**Tax Annual Amount:** \$1,246.18

## School Information

**High School District:** New Buffalo

## Miscellaneous

**Road Surface Type:** Paved

**Listing Terms:** Cash, Conventional

**CrossStreet:** Grand Beach Rd

Call us now