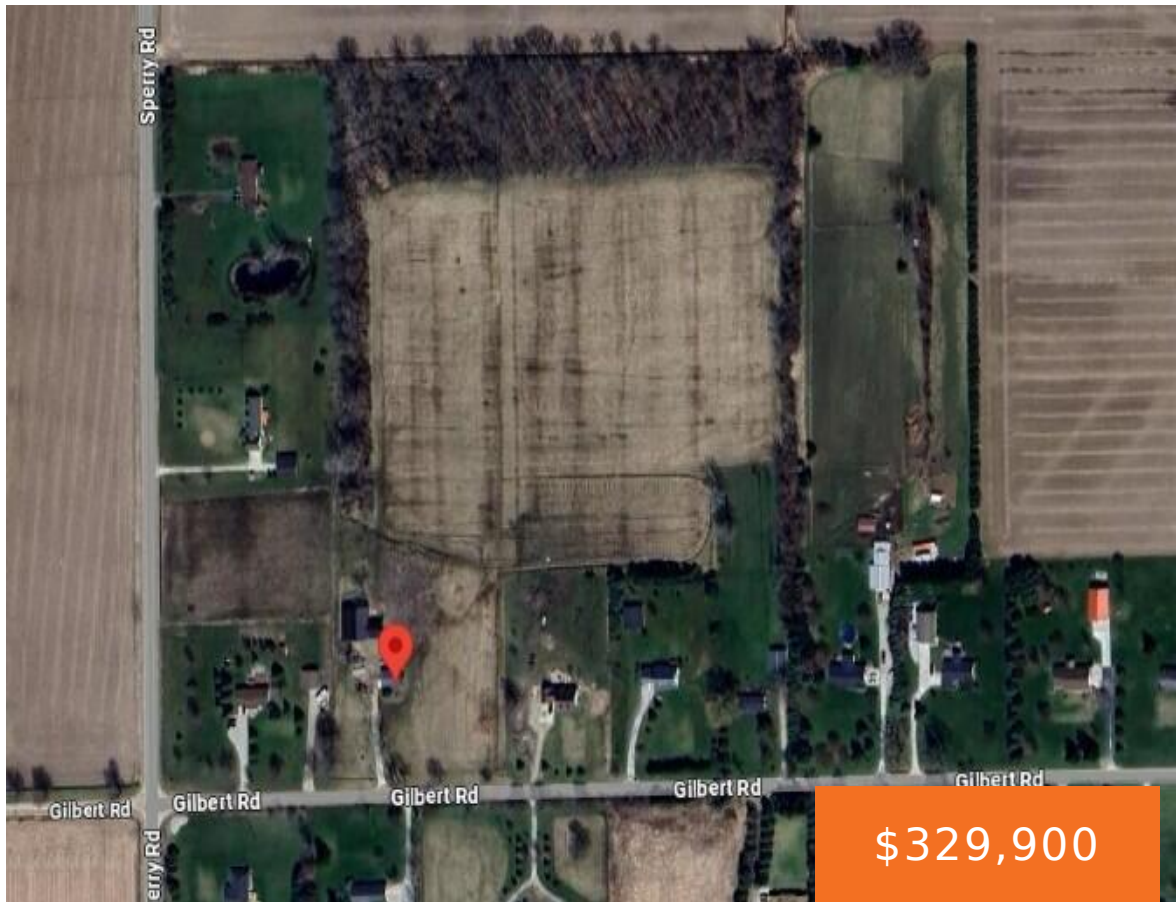
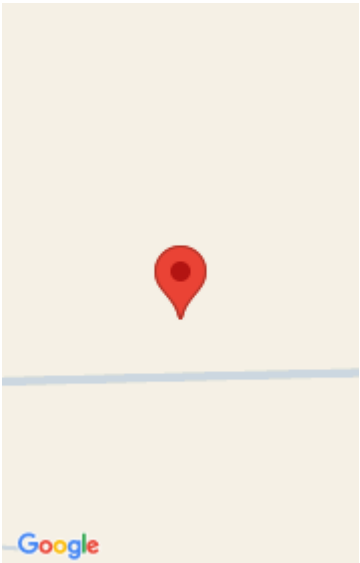


14476, GILBERT, BERLIN, MI, 48002
https://tuckerbenner.com



22.64 Acres in Armada Schools with Natural Gas at the road! There are 2 Barns a 48'x56' built in 2021 w/ an adjacent 24'x24' addition, includes cement floor, 200 amp service, & water. Plus, there's a 30x40 pole barn that also has cement floor, electricity, water, and a pad with poles in place to build [...]

- 0 baths
- Acreage
- Land
- Active



Basics

Category: Land

Status: Active

Lot size: 22.64 sq ft

County: St. Clair

Type: Acreage

Bathrooms: 0 baths

Lot Size Acres: 22.64 acres

Building Details

Current Use: Hunting, Farm, Agricultural

Amenities & Features

Utilities: Natural Gas Available, Electricity Connected

WaterSource: Well

Lot Features: Level, Buildable, Tillable, Wooded

Fees & Taxes

Tax Assessed Value: \$97,803

Tax Year: 2024

Tax Annual Amount: \$3,267

School Information

High School District: Armada

Miscellaneous

CrossStreet: Gilbert & Sperry

Listing Terms: Cash, Conventional

Call us now