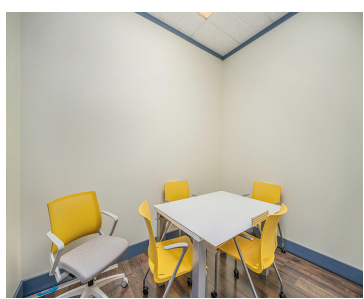


145, BRADY, ALLEGAN, MI, 49010

<https://tuckerbenner.com>



Discover this historic commercial building nestled in the heart of vibrant downtown Allegan. Overlooking the picturesque Riverfront Plaza, the Amphitheater, and the tranquil Kalamazoo River, this property offers breathtaking views. The main level, utilized as office space, presents a versatile canvas for various businesses. Envision the potential of transforming the upper levels into charming apartments [...]

- 1 bath
- Office
- Commercial Sale
- Active



Basics



Call us now

Phone: (231)730-8781
Email: tuckerbennerteam@gmail.com
Address: 2747 Lakeshore Drive, Twin Lake, MI 49457



Category: Commercial Sale

Status: Active

Lot size: 0.05 sq ft

Bathrooms Full: 1

Business Type: Professional/Office, Professional Service, Storage, Retail

Type: Office

Bathrooms: 1 bath

Year built: 1890

Lot Size Acres: 0.05 acres

County: Allegan

Building Details

Building Area Total: 5589 sq ft

Construction Materials: Block, Brick

Heating: Forced Air

Foundation Details: Block

Number Of Units Total: 3

Sewer: Public Sewer

StoriesTotal: 3

Number Of Buildings: 1

Amenities & Features

Inclusions: Real Estate

Utilities: Phone Available, Natural Gas Available, Electricity Available, Cable Available, Phone Connected, Natural Gas Connected, Electricity Connected, Cable Connected, Water Available, Sewer Available, Storm Sewer

Waterfront Features:
River

WaterSource: Public

Cooling: Central Air

Fees & Taxes

Tax Assessed Value: \$63,614

Tax Year: 2024

Tax Annual Amount: \$4,011.08

School Information



Call us now

Phone: (231)730-8781

Email: tuckerbennerteam@gmail.com

Address: 2747 Lakeshore Drive, Twin Lake, MI 49457



High School District: Allegan

Miscellaneous

Road Surface Type: Paved

CrossStreet: State and Hubbard

Listing Terms: Conventional, Cash

Tenant Pays: Electricity, Gas, Sewer, Water



Call us now

Phone: (231)730-8781

Email: tuckerbennerteam@gmail.com

Address: 2747 Lakeshore Drive, Twin Lake, MI 49457

