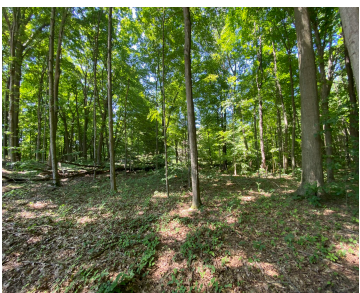


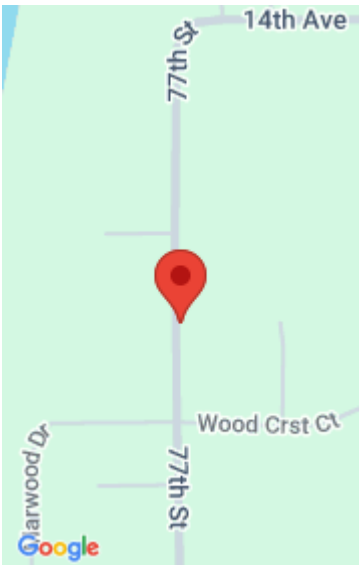
14606, CREST VIEW COURT, SOUTH HAVEN, MI, 49090

<https://tuckerbenner.com>



Beautiful, wooded lot in the gated community of Wood Crest! This neighborhood grants privacy, exclusivity, and respite with all the modern utilities. The long-term value is in the properly crafted documents ensuring architectural control and no short-term rentals. It’s located less than one mile from the beach access, hiking, downtown South Haven & more. Let’s [...]

- 0 baths
- Lot
- Land
- Active



Basics

Category: Land

Status: Active

Lot size: 0.8 sq ft

County: Van Buren

Type: Lot

Bathrooms: 0 baths

Lot Size Acres: 0.8 acres

Amenities & Features

Utilities: Phone Available, Water Available, Sewer Available, Broadband, Water Connected, Sewer Connected, Electricity Connected

Lot Features: Buildable, Wooded

Fees & Taxes

Tax Assessed Value: \$2,646

Tax Annual Amount: \$141.95

Tax Year: 2024

School Information

High School District: South Haven

Miscellaneous

Road Surface Type: Paved

Listing Terms: Cash, Conventional

CrossStreet: 77th & Marwood Drive

Call us now