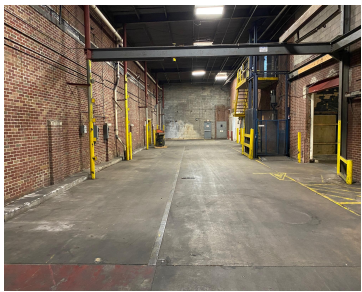
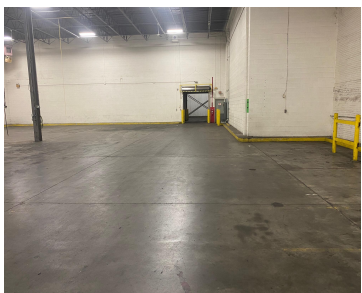


147, 6TH, HOLLAND, MI, 49423

https://tuckerbenner.com



\$4,200,000



- 4 baths
- Industrial
- Commercial Sale
- Active

Light manufacturing, warehousing space, or possibility for retail, available in downtown Holland location on the corner of 6th & Columbia Avenue. Multiple loading docks, including one on 6th St. and others along the parking lot. Two large, ground-level overhead doors along 6th St. Office spaces in the front SW corner and potential retail space in [...]



Basics

Category: Commercial Sale

Status: Active

Lot size: 2.02 sq ft

Bathrooms Full: 4

Business Type: Other, Professional/Office, Distribution, Storage, Manufacturing

Type: Industrial

Bathrooms: 4 baths

Year built: 1956

Lot Size Acres: 2.02 acres

County: Ottawa

Call us now



Phone: (231)730-8781

Email: tuckerbennerteam@gmail.com

Address: 2747 Lakeshore Drive, Twin Lake, MI 49457



Building Details

Building Area Total: 76225 sq ft

Construction Materials: Block, Metal Siding

StoriesTotal: 9999

Number Of Units Total: 1

Heating: Forced Air

Number Of Buildings: 1

Amenities & Features

Inclusions: Non-Applicable

Utilities: Phone Available, Natural Gas Available, Electricity Available, Cable Available, Natural Gas Connected, Electricity Connected, Storm Sewer

Fees & Taxes

Tax Assessed Value: \$249,248

Tax Year: 2025

Tax Annual Amount: \$26,375

School Information

High School District: Holland

Miscellaneous

Road Surface Type: Paved

CrossStreet: Columbia & 6th

Listing Terms: Conventional, Cash

Call us now



Phone: (231)730-8781

Email: tuckerbennerteam@gmail.com

Address: 2747 Lakeshore Drive, Twin Lake, MI 49457

