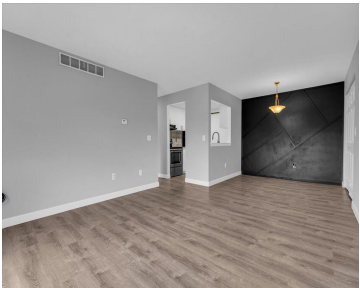
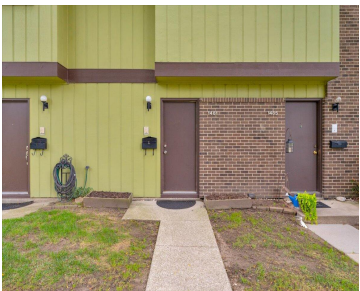
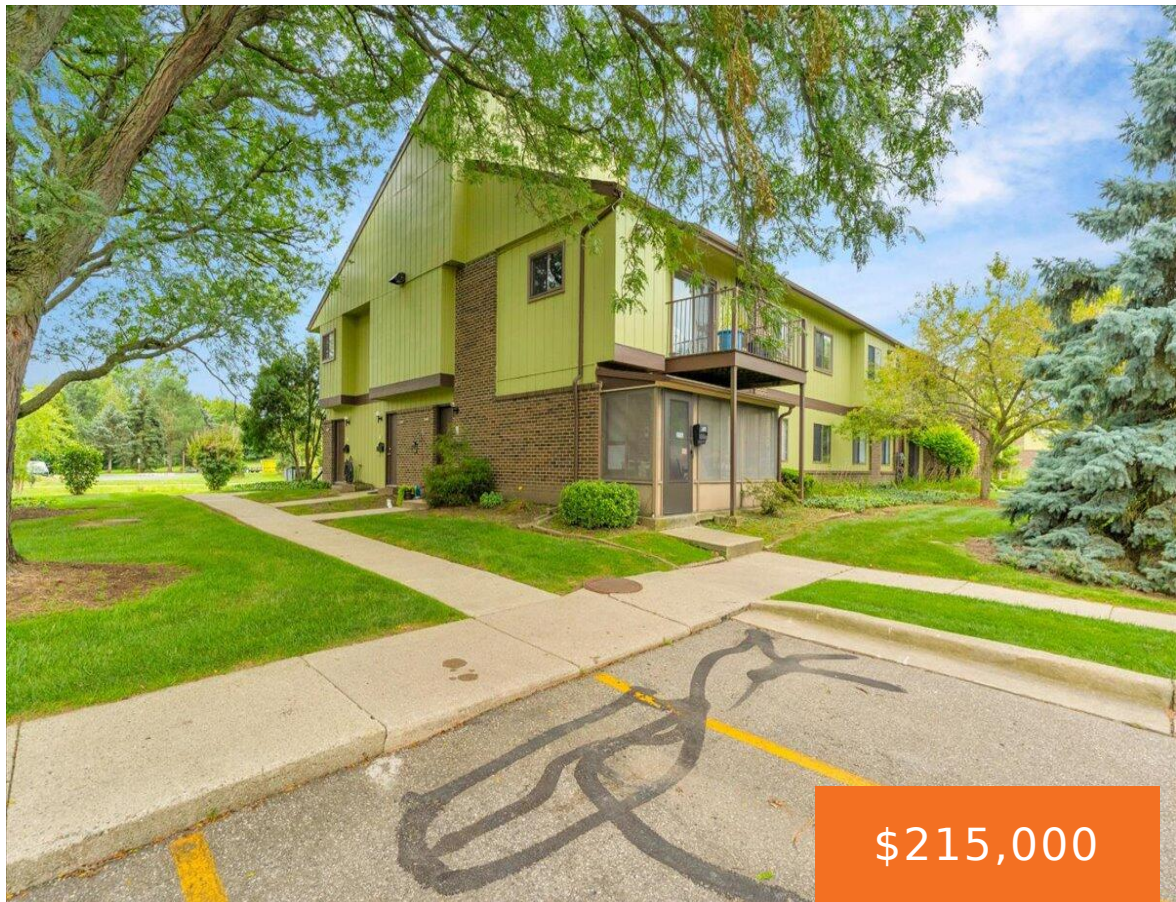


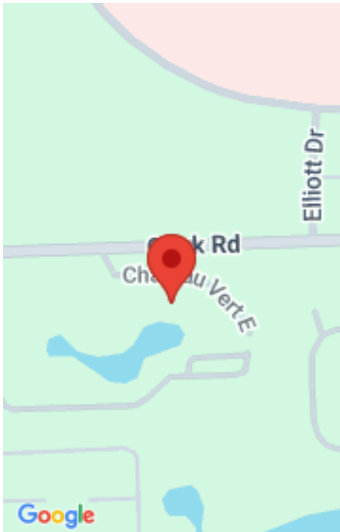
1481, CHATEAU VERT, YPSILANTI, MI, 48197

https://tuckerbenner.com



Welcome to this beautifully updated 2-bedroom, 2-bath condo offering comfort, convenience, and modern style in a highly desirable community. This home features a private entry and boasts the best view in the community, overlooking the entire pond — perfect for relaxing mornings or evening sunsets. Inside, you'll find a thoughtfully updated interior with 2022 renovations [...]

- 2 beds
- 2 baths
- Condominium
- Residential
- Active
- 1062 sq ft



Call us now

Phone: (231)730-8781
Email: tuckerbennerteam@gmail.com
Address: 2747 Lakeshore Drive, Twin Lake, MI 49457

Basics

Category: Residential

Status: Active

Bathrooms: 2 baths

Lot size: 0.03 sq ft

Bathrooms Full: 2

Rooms Total: 2

Type: Condominium

Bedrooms: 2 beds

Area: 1062 sq ft

Year built: 1979

Lot Size Acres: 0.03 acres

County: Washtenaw

Building Details

Building Area Total: 1062 sq ft

Construction Materials: Brick, Vinyl Siding

Architectural Style: Other

Sewer: Public

Heating: Forced Air

Stories: 1

Basement: Other

Amenities & Features

Laundry Features: Laundry Closet

Utilities: Natural Gas Connected

Parking Features: Carport

WaterSource: Public

Interior Features: Ceiling Fan(s), Pantry

Patio And Porch Features: Patio

Flooring: Vinyl

Association Amenities: End Unit

Waterfront Features: Pond

Appliances: Disposal, Dryer, Freezer, Oven, Range, Refrigerator, Washer

Lot Features: Sidewalk, Site Condo

Cooling: Central Air

Fees & Taxes

Call us now



Tax Assessed Value: \$61,720

Association Fee: \$374

Tax Annual Amount: \$2,891.51

Association Fee Frequency: Monthly

Tax Year: 2025

Association Fee Includes: Water, Trash, Snow Removal,
Lawn/Yard Care

School Information

High School District: Ypsilanti

HighSchool: Ypsilanti Community High School

Middle Or Junior School: Ypsilanti
Community Middle School

Elementary School: Erickson Elementary
School

Miscellaneous

CrossStreet: Clark

Listing Terms: Cash, Conventional

Call us now



Phone: (231)730-8781

Email: tuckerbennerteam@gmail.com

Address: 2747 Lakeshore Drive, Twin Lake, MI 49457

