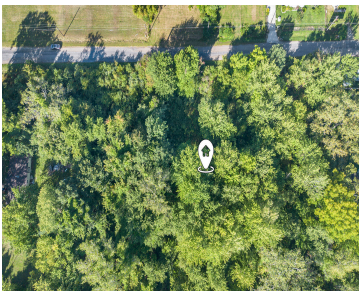


149, BRIDGMAN, BENTON HARBOR, MI, 49022

<https://tuckerbenner.com>



Charming .99-acre property in Benton Harbor offering endless possibilities! This nearly one-acre parcel provides plenty of space for your vision—whether building your dream home, adding a pole barn, or creating a private retreat. With approximately 225 feet of depth, the lot offers flexibility for layout and design. Conveniently located near local amenities, schools, and Lake [...]

- 0 baths
- Lot
- Land
- Active



Basics

Category: Land

Status: Active

Lot size: 0.99 sq ft

County: Berrien

Type: Lot

Bathrooms: 0 baths

Lot Size Acres: 0.99 acres

Amenities & Features

Utilities: Natural Gas Available, Electricity Available, Cable Available, Phone Available, None

Lot Features: Buildable, Wooded

Fees & Taxes

Tax Assessed Value: \$715

Tax Year: 2024

Tax Annual Amount: \$427

School Information

High School District: Benton Harbor

Miscellaneous

Road Surface Type: Paved

CrossStreet: Bridgman Ave & Highland Ave

Listing Terms: Cash

Call us now