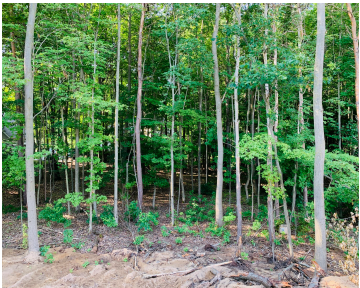
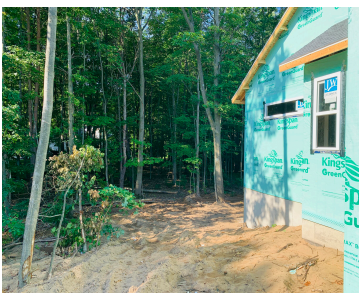


14934, TIMBEROAK, HOLLAND, MI, 49424

https://tuckerbenner.com

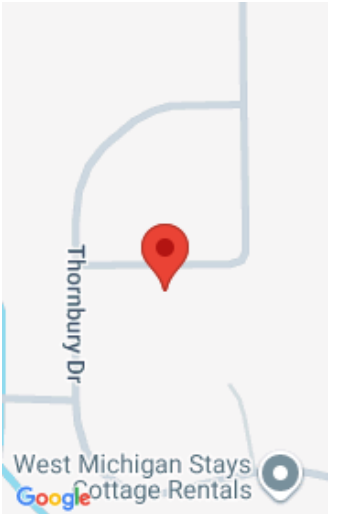


\$625,000



JTB Homes presents one of our most popular floor plans – The Pentwater ranch. This model home features almost 2,500 sq ft located in Holland/West Ottawa Schools. This beautiful and open kitchen features solid surface counter tops with an over-sized center island, complete with a stainless steel appliance package. Off the kitchen is a large [...]

- 3 beds
- 3 baths
- Single Family Residence
- Residential
- Active
- 2432 sq ft



Call us now



Phone: (231)730-8781

Email: tuckerbennerteam@gmail.com

Address: 2747 Lakeshore Drive, Twin Lake, MI 49457



Basics

Category: Residential

Status: Active

Bathrooms: 3 baths

Lot size: 0.34 sq ft

Subdivision Name: Timberline Woods

Lot Size Acres: 0.34 acres

County: Ottawa

Type: Single Family Residence

Bedrooms: 3 beds

Area: 2432 sq ft

Year built: 2025

Bathrooms Full: 2

Rooms Total: 12

Bathrooms Half: 1

Building Details

Building Area Total: 1740 sq ft

Construction Materials: Stone, Vinyl Siding

Architectural Style: Ranch

Sewer: Public

Heating: Forced Air

Stories: 1

Roof: Asphalt, Fiberglass

Basement: Daylight

Amenities & Features

Laundry Features: Gas Dryer Hookup, Laundry Room, Main Level, Washer Hookup

Utilities: Phone Available, Cable Available, Natural Gas Connected

Fireplace Features: Gas Log, Living Room

WaterSource: Public

Interior Features: Ceiling Fan(s), Broadband, Garage Door Opener, Center Island, Eat-in Kitchen, Pantry

Window Features: Low-Emissivity Windows, Screens, Insulated Windows, Garden Window

Cooling: Central Air, SEER 13 or Greater

Flooring: Laminate

Parking Features: Garage Faces Front, Garage Door Opener, Attached

Garage Spaces: 3

Appliances: Humidifier, Dishwasher, Disposal, Microwave, Range, Refrigerator

Lot Features: Wooded

Fireplaces Total: 1

Call us now



Fees & Taxes

Tax Assessed Value: \$4,011

Association Fee: \$90

Association Fee Includes: None

Association Fee Frequency: Annually

Tax Year: 2024

School Information

High School District: West Ottawa

Miscellaneous

Road Surface Type: Paved

CrossStreet: Corner of Riley and 152nd

Listing Terms: Cash, FHA, VA Loan, Conventional

Call us now