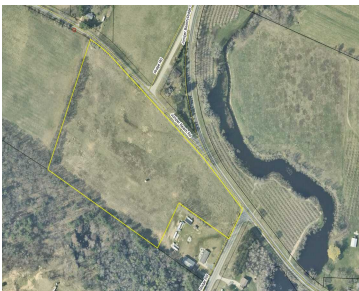


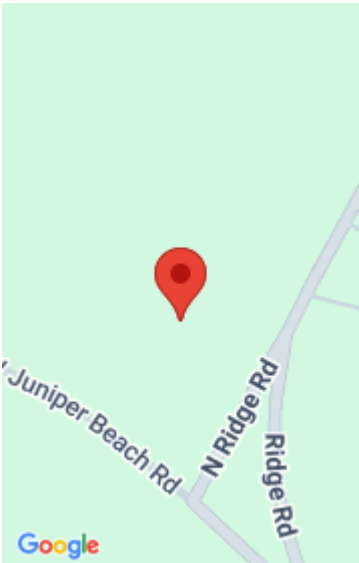
15, JUNIPER BEACH, MEARS, MI, 49436

<https://tuckerbenner.com>



Unique opportunity to own 15 acres close to the Silver Lake Sand Dunes, Silver Lake, Pentwater and Lake Michigan. Numerous development possibilities with multiple splits available. Amazing location, open ground, wooded border, lightly rolling terrain. Few parcels left like this in area. Don't overlook the potential of this property. 1.75 miles to the Dune Entrance [...]

- 0 baths
- Acreage
- Land
- Active



Basics

Category: Land

Status: Active

Lot size: 15.03 sq ft

County: Oceana

Type: Acreage

Bathrooms: 0 baths

Lot Size Acres: 15.03 acres

Building Details

Current Use: Residential, Recreational, Hunting, Agricultural

Amenities & Features

Utilities: Electric Connected, Electric Available

Lot Features: Level, Buildable, Recreational

Fees & Taxes

Tax Assessed Value: \$19,845

Tax Year: 2024

Tax Annual Amount: \$546.31

School Information

High School District: Hart

Miscellaneous

Road Surface Type: Paved

CrossStreet: Ridge Road

Listing Terms: Cash, Conventional

Call us now