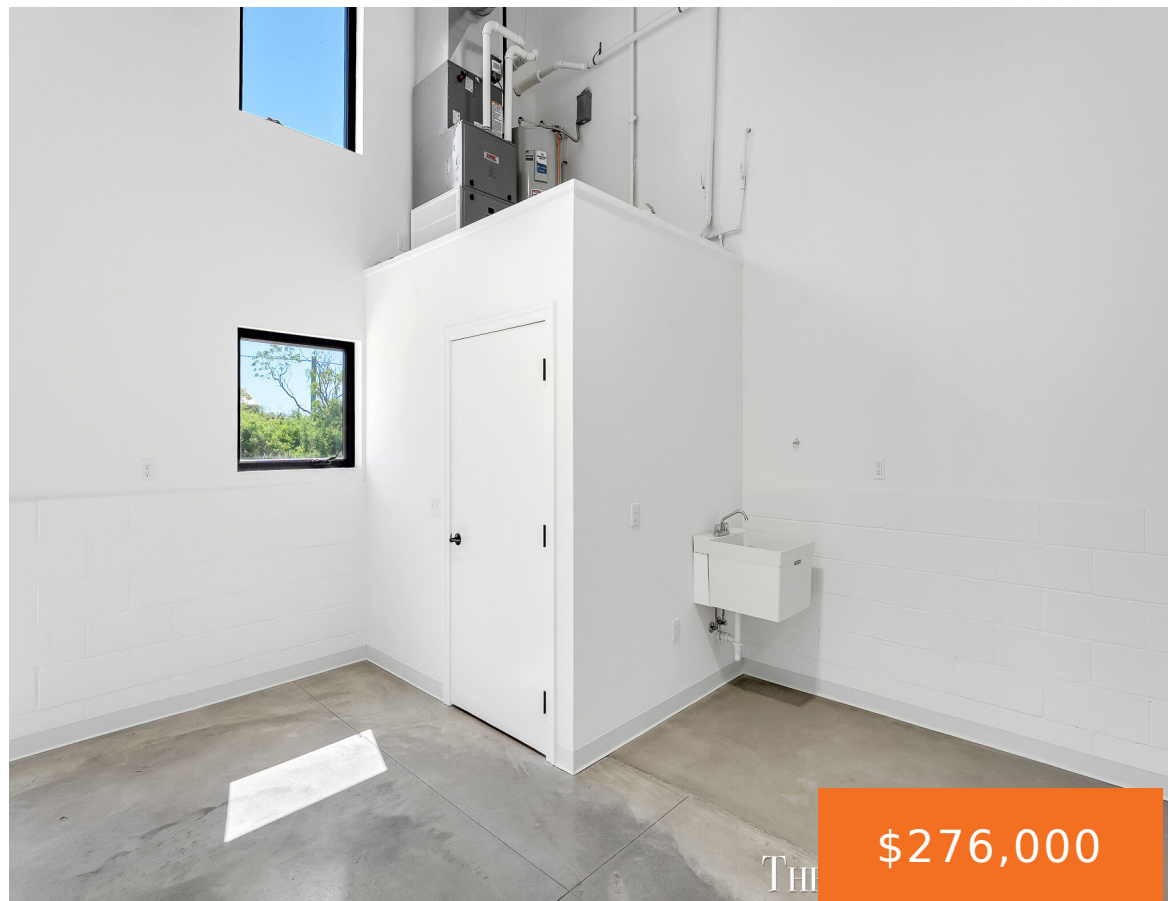


# 1500, KOOIMAN, GRAND HAVEN, MI, 49417

<https://tuckerbenner.com>



Welcome to Kooiman Place - a modern, flexible development designed to meet the needs of entrepreneurs, small business owners, and professionals looking for a unique space to grow. Currently under development, these innovative units offer the perfect blend of workspace and storage in one thoughtfully designed location. Commercial spaces are available in 1,248 sq ft [...]

- 0 baths
- Business
- Commercial Sale
- Active



## Basics

**Category:** Commercial Sale **Type:** Business

**Status:** Active

**Bathrooms:** 0 baths

**Lot size:** 0 sq ft

**Year built:** 2026

**Lot Size Acres:** 0 acres

**Business Type:** Professional/Office, Professional Service, Storage

**County:** Ottawa

## Call us now



Phone: (231)730-8781

Email: [tuckerbennerteam@gmail.com](mailto:tuckerbennerteam@gmail.com)

Address: 2747 Lakeshore Drive, Twin Lake, MI 49457



---

## Building Details

**Building Area Total:** 1248 sq ft

**Construction Materials:** Block, Metal Siding

**StoriesTotal:** 1

**Number Of Units Total:** 1

**Heating:** Forced Air

**Number Of Buildings:** 1

---

## Amenities & Features

**Inclusions:** Non-Applicable

**Utilities:** Natural Gas Available, Electricity Available, Cable Available, Storm Sewer, None

**Interior Features:** Broadband **Cooling:** Central Air

---

## School Information

**High School District:** Grand Haven

---

## Miscellaneous

**CrossStreet:** Hillcrest & Beacon Blvd

**Listing Terms:** Conventional, Cash

### Call us now



Phone: (231)730-8781

Email: tuckerbennerteam@gmail.com

Address: 2747 Lakeshore Drive, Twin Lake, MI 49457

