

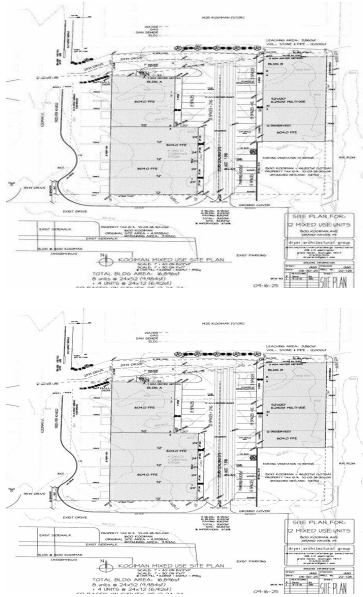
# 1500, KOOIMAN, GRAND HAVEN, MI, 49417

<https://tuckerbenner.com>



\$288,000

Welcome to Kooiman Place - a modern, flexible development designed to meet the needs of entrepreneurs, small business owners, and professionals looking for a unique space to grow. Currently under development, these innovative units offer the perfect blend of workspace and storage in one thoughtfully designed location. Commercial spaces are available in 1,248 sq ft [...]



- 0 baths
- Business
- Commercial Sale
- Active



## Call us now

Phone: (231)730-8781  
Email: [tuckerbennerteam@gmail.com](mailto:tuckerbennerteam@gmail.com)  
Address: 2747 Lakeshore Drive, Twin Lake, MI 49457

# Basics

**Category:** Commercial Sale    **Type:** Business  
**Status:** Active    **Bathrooms:** 0 baths  
**Lot size:** 0 sq ft    **Year built:** 2026  
**Lot Size Acres:** 0 acres    **Business Type:** Professional/Office, Professional Service, Storage  
**County:** Ottawa

# Building Details

**Building Area Total:** 1248 sq ft    **Number Of Units Total:** 1  
**Construction Materials:** Block, Metal Siding    **Heating:** Forced Air  
**StoriesTotal:** 1    **Number Of Buildings:** 1

# Amenities & Features

**Inclusions:** Non-Applicable    **Utilities:** Natural Gas Available, Electricity Available, Cable Available, Storm Sewer, None  
**Interior Features:** Broadband    **Cooling:** Central Air

# School Information

**High School District:** Grand Haven

# Miscellaneous

**CrossStreet:** Hillcrest St & S Beacon Blvd    **Listing Terms:** Conventional, Cash

## Call us now