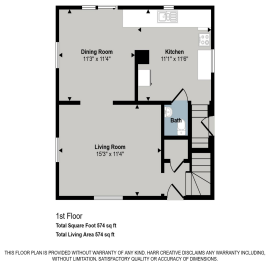


1513, SYLVAN, GRAND RAPIDS, MI, 49506

<https://tuckerbenner.com>



Welcome to 1513 Sylvan! Move in ready and well appointed home within close distance to Mullick and Cambridge Parks. 3 bed 2.5 baths with over 1500+ sq ft of living space. This home features many updates including replacement vinyl windows for added efficiency, updated furnace (18), AC (22) and Roof (21). Inside you'll find a [...]

- 3 beds
- 3 baths
- Single Family Residence
- Residential
- Active
- 1556 sq ft



Basics

Category: Residential

Status: Active

Bathrooms: 3 baths

Lot size: 0.1 sq ft

Bathrooms Full: 2

Rooms Total: 8

Bathrooms Half: 1

Type: Single Family Residence

Bedrooms: 3 beds

Area: 1556 sq ft

Year built: 1953

Lot Size Acres: 0.1 acres

County: Kent

Building Details

Building Area Total: 1161 sq ft

Architectural Style: Traditional

Heating: Forced Air

Roof: Composition

Construction Materials: Wood Siding

Sewer: Public

Stories: 2

Basement: Full

Amenities & Features

Laundry Features: In Basement

Parking Features: Detached

WaterSource: Public

Interior Features: Eat-in Kitchen

Cooling: Central Air

Fencing: Fenced Back

Garage Spaces: 1

Appliances: Dishwasher, Dryer, Microwave, Range, Refrigerator, Washer

Window Features: Replacement, Insulated Windows

Fees & Taxes

Tax Assessed Value: \$76,552

Tax Annual Amount: \$2,500.63

Tax Year: 2025

Call us now

School Information

High School District: Grand Rapids

Miscellaneous

CrossStreet: Boston **Listing Terms:** Cash, FHA, VA Loan, MSHDA, Conventional

Call us now