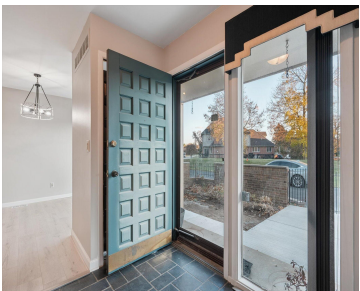


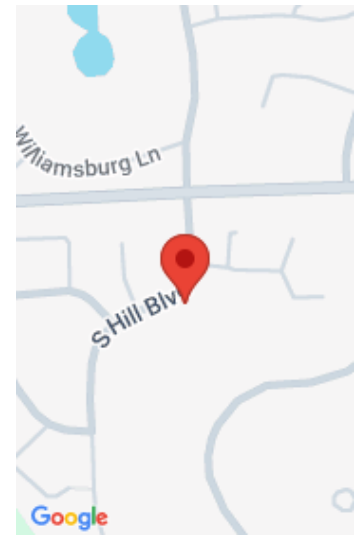
1525, HILL, BLOOMFIELD HILLS, MI, 48304

https://tuckerbenner.com



Welcome home to this beautifully refreshed condo in Bloomfield Hills. Thoughtfully updated with new flooring and fresh paint, this spacious unit offers a clean, modern feel with plenty of natural light pouring in from oversized windows and doors. The open living and dining areas flow into an outdoor patio space, while vaulted ceilings and exposed [...]

- 2 beds
- 2 baths
- Condominium
- Residential
- Active
- 1584 sq ft



Basics

Category: Residential

Status: Active

Bathrooms: 2 baths

Lot size: 8.42 sq ft

Bathrooms Full: 2

Rooms Total: 7

Type: Condominium

Bedrooms: 2 beds

Area: 1584 sq ft

Year built: 1974

Lot Size Acres: 8.42 acres

County: Oakland

Building Details

Building Area Total: 1584 sq ft

Architectural Style: Cape Cod, Contemporary

Heating: Forced Air

Basement: Full

Construction Materials: Wood Siding

Sewer: Public

Stories: 2

Amenities & Features

Laundry Features: In Unit, Laundry Room

Utilities: Phone Connected, Cable Connected, High-Speed Internet

Parking Features: Garage Faces Front, Carport, Attached

Garage Spaces: 1

Appliances: Dishwasher, Disposal, Dryer, Range, Refrigerator, Washer

Lot Features: Cul-De-Sac

Fireplaces Total: 1

Flooring: Carpet, Other, Tile, Vinyl, Wood

Association Amenities: Clubhouse, End Unit, Fitness Center, Pool, Tennis Court(s)

Fireplace Features: Family Room

WaterSource: Public

Interior Features: Garage Door Opener, Eat-in Kitchen

Patio And Porch Features: Patio, Porch(es)

Cooling: Central Air

Fees & Taxes

Call us now

Tax Assessed Value: \$56,670

Association Fee: \$382

Tax Annual Amount: \$2,033

Association Fee Frequency: Monthly

Tax Year: 2025

Association Fee Includes: Water, Trash, Snow Removal,
Lawn/Yard Care

School Information

High School District: Avondale

Miscellaneous

Road Surface Type: Paved

CrossStreet: South Blvd

Listing Terms: Cash, Conventional

Call us now