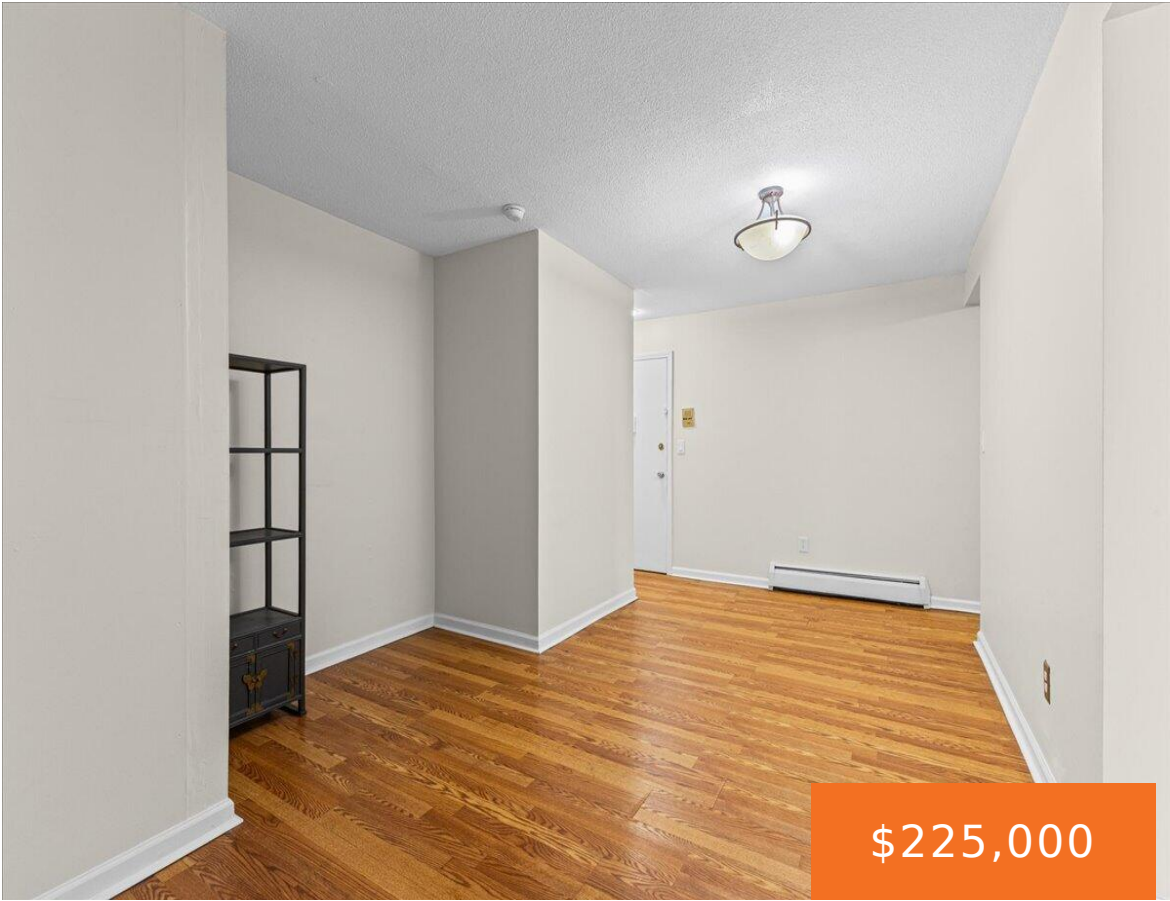
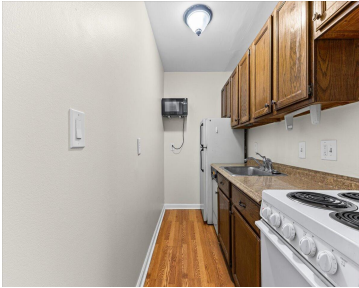
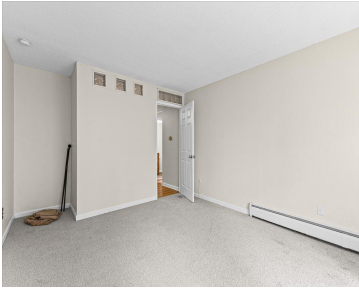
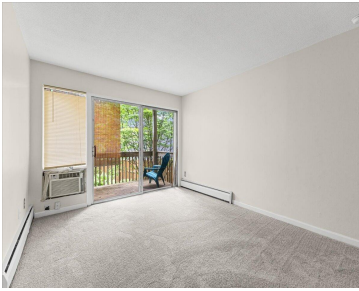


1531, PACKARD, ANN ARBOR, MI, 48104

<https://tuckerbenner.com>



\$225,000



Welcome to 1531 Packard Street #13, a rare 2-bedroom condo ideally located adjacent to the highly sought-after Burns Park neighborhood in Ann Arbor. This light-filled unit offers a combination of walkability, convenience, and low-maintenance living just minutes from the University of Michigan Central Campus, downtown Ann Arbor, Nichols Arboretum and its infamous peony garden, restaurants, [...]

- 1 bed
- 1 bath
- Condominium
- Residential
- Active
- 647 sq ft



Basics

Call us now



Phone: (231)730-8781
Email: tuckerbennerteam@gmail.com
Address: 2747 Lakeshore Drive, Twin Lake, MI 49457



Category: Residential

Status: Active

Bathrooms: 1 bath

Year built: 1966

Bathrooms Full: 1

Rooms Total: 5

Type: Condominium

Bedrooms: 1 bed

Area: 647 sq ft

Subdivision Name: Burns Park Condo

Lot Size Acres: 0 acres

County: Washtenaw

Building Details

Building Area Total: 647 sq ft

Architectural Style: Ranch

Heating: Forced Air

Basement: Slab

Construction Materials: Brick

Sewer: Public

Stories: 1

Amenities & Features

Laundry Features: Common Area, Lower Level

Utilities: Cable Connected, High-Speed Internet

WaterSource: Public

Lot Features: Sidewalk, Wooded

Exterior Features: Balcony

Flooring: Carpet, Laminate

Association Amenities: Interior Unit, Laundry, Storage

Appliances: Dishwasher, Disposal, Microwave, Range, Refrigerator

Window Features: Window Treatments

Cooling: Window Unit(s)

Fees & Taxes

Tax Assessed Value: \$40,410 **Association Fee Frequency:** Monthly

Association Fee: \$312

Tax Year: 2026

Tax Annual Amount: \$2,733

Association Fee Includes: Other, Water, Trash, Snow Removal, Sewer, Lawn/Yard Care, Heat

Call us now



Phone: (231)730-8781

Email: tuckerbennerteam@gmail.com

Address: 2747 Lakeshore Drive, Twin Lake, MI 49457



School Information

High School District: Ann Arbor

HighSchool: Pioneer High School

Middle Or Junior School: Tappan Middle School

Elementary School: Burns Park Elementary School

Miscellaneous

Road Surface Type: Paved

CrossStreet: E Stadium Blvd & Packard St

Listing Terms: Cash, Conventional

Call us now



Phone: (231)730-8781

Email: tuckerbennerteam@gmail.com

Address: 2747 Lakeshore Drive, Twin Lake, MI 49457

