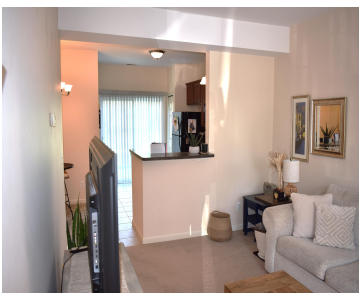


**156, WILMINGTON, DUNDEE, MI, 48131**  
<https://tuckerbenner.com>

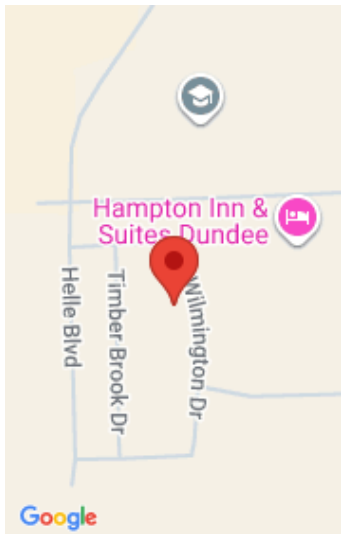


\$165,000

Located in popular Courtyards of Dundee, this 2 Bedroom, 2.5 Bath end-unit Condo offers over 930sqft. of living space complimented by a spacious Living Room, inviting Kitchen w/full Appliances, Dining area and a light-filled door wall leading to a private back Patio. The second level includes impressive Vaulted Bedrooms offering private full Baths and walk-in [...]



- 2 beds
- 3 baths
- Condominium
- Residential
- Active
- 930 sq ft



**Call us now**

Phone: (231)730-8781  
Email: [tuckerbennerteam@gmail.com](mailto:tuckerbennerteam@gmail.com)  
Address: 2747 Lakeshore Drive, Twin Lake, MI 49457

# Basics

**Category:** Residential

**Status:** Active

**Bathrooms:** 3 baths

**Lot size:** 0 sq ft

**Subdivision Name:** Courtyards of Dundee

**Lot Size Acres:** 0 acres

**County:** Monroe

**Type:** Condominium

**Bedrooms:** 2 beds

**Area:** 930 sq ft

**Year built:** 2006

**Bathrooms Full:** 2

**Rooms Total:** 9

**Bathrooms Half:** 1

# Building Details

**Building Area Total:** 930 sq ft

**Sewer:** Public

**Stories:** 2

**Basement:** Slab

**Construction Materials:** Brick, Vinyl Siding

**Heating:** Forced Air

**Roof:** Shingle

# Amenities & Features

**Laundry Features:** Laundry Room, Upper Level

**Utilities:** Natural Gas Connected, Storm Sewer, High-Speed Internet

**WaterSource:** Public

**Interior Features:** Eat-in Kitchen, Pantry

**Patio And Porch Features:** Patio

**Flooring:** Carpet, Vinyl

**Association Amenities:** End Unit, Pets Allowed

**Appliances:** Dishwasher, Disposal, Microwave, Oven, Range, Refrigerator, Washer

**Lot Features:** Sidewalk, Site Condo

**Cooling:** Central Air

# Fees & Taxes

Call us now

**Tax Assessed Value:** \$61,239

**Association Fee Frequency:** Monthly

**Association Fee:** \$145

**Tax Year:** 2024

**Tax Annual Amount:** \$3,621

**Association Fee Includes:** Snow Removal, Lawn/Yard Care

## School Information

**High School District:** Dundee

## Miscellaneous

**Road Surface Type:** Paved

**CrossStreet:** Helle and Powell

**Listing Terms:** Cash, Conventional

**Call us now**