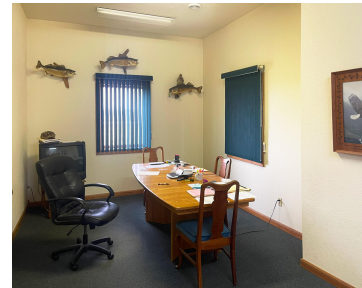
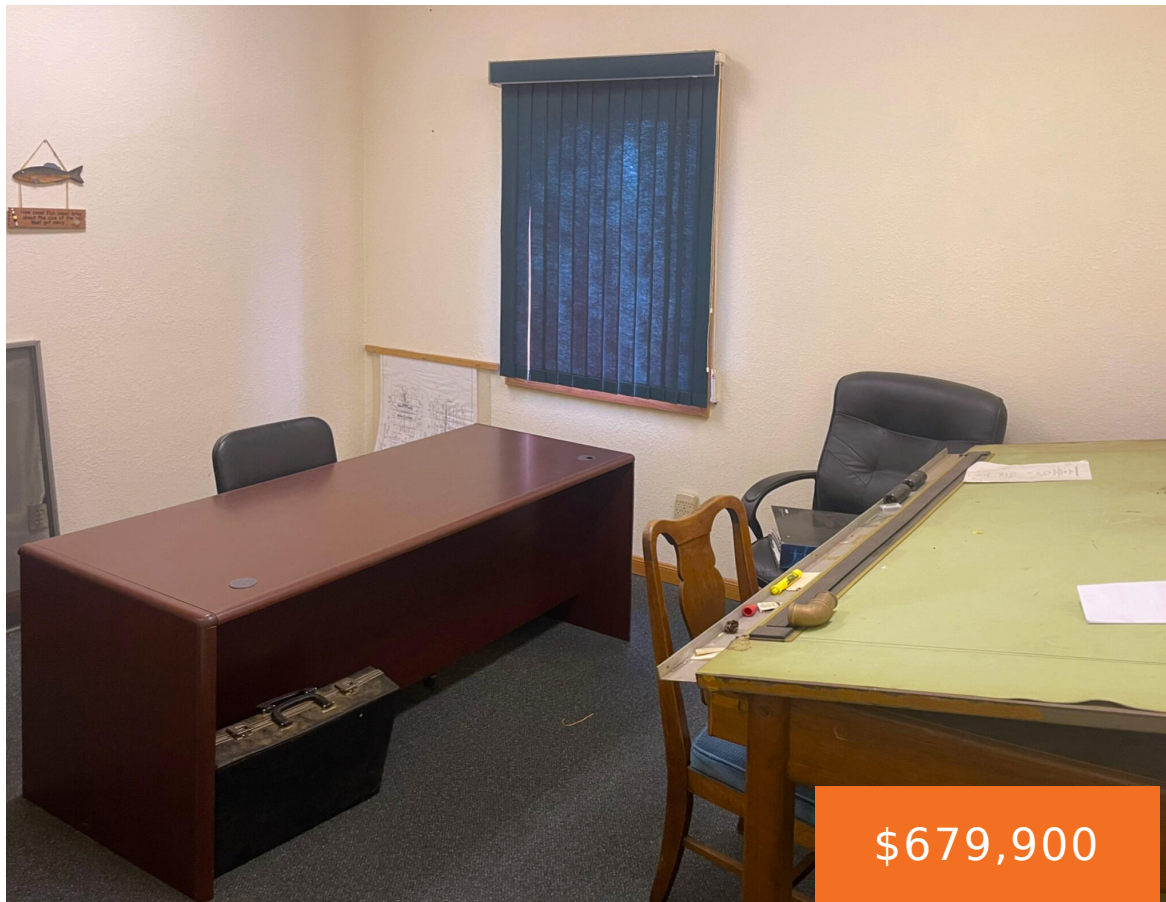


15675, MORRIS INDUSTRIAL, SCHOOLCRAFT, MI, 49087

<https://tuckerbenner.com>



Discover this prime industrial opportunity located in Schoolcraft, Michigan. Measuring approximately 6,400 SF, this property offers endless possibilities for manufacturing, warehousing, distribution or even redevelopment. Boasting 4.18 acres of land, this property provides abundant space for expansion. Three overhead doors, 10' ceilings, 6" reinforced concrete floors throughout and approximately 2,000 SF of office space. Located [...]

- 2 baths
- Industrial
- Commercial Sale
- Active



Basics

Category: Commercial Sale

Status: Active

Lot size: 4.18 sq ft

Bathrooms Full: 2

Business Type: Professional/Office, Manufacturing

Type: Industrial

Bathrooms: 2 baths

Year built: 2002

Lot Size Acres: 4.18 acres

County: Kalamazoo

Call us now



Phone: (231)730-8781

Email: tuckerbennerteam@gmail.com

Address: 2747 Lakeshore Drive, Twin Lake, MI 49457



Building Details

Building Area Total: 6400 sq ft

Sewer: Septic Tank

StoriesTotal: 1

Number Of Units Total: 1

Heating: Radiant, Hot Water

Number Of Buildings: 1

Amenities & Features

Inclusions: Non-Applicable **Utilities:** Phone Available, Natural Gas Available, Electricity Available, Cable Available, Phone Connected, Natural Gas Connected, Electricity Connected

WaterSource: Well

Fees & Taxes

Tax Assessed Value: \$141,227

Tax Year: 2026

Tax Annual Amount: \$7,334

School Information

High School District: Schoolcraft

Miscellaneous

CrossStreet: Morris Industrial & -

Listing Terms: Conventional, Cash

Call us now



Phone: (231)730-8781

Email: tuckerbennerteam@gmail.com

Address: 2747 Lakeshore Drive, Twin Lake, MI 49457

