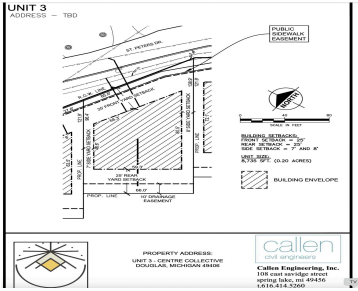


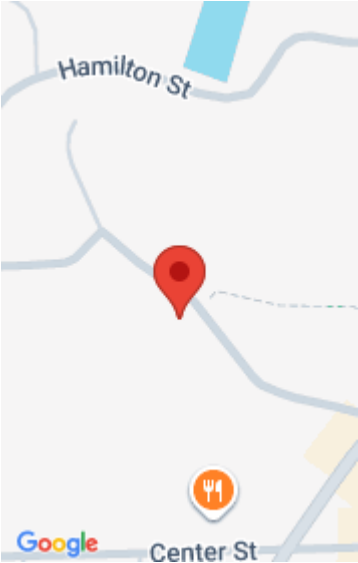
158, ST PETERS, DOUGLAS, MI, 49406

https://tuckerbenner.com



THIS LOT IS RESERVED!! Scandinavian-Inspired Living Near the Shores of Lake Michigan! Rare opportunity to own a homesite in an exclusive 19-lot development just a short walk to the pristine beaches of Lake Michigan. Located in the charming communities of Douglas & Saugatuck, MI, this new development is designed for single-family homes, blending modern simplicity, [...]

- 0 baths
- Lot
- Land
- Active



Basics

Category: Land

Status: Active

Lot size: 0.18 sq ft

County: Allegan

Type: Lot

Bathrooms: 0 baths

Lot Size Acres: 0.18 acres

Building Details

Sewer: Public Sewer

Current Use: Residential

Amenities & Features

Utilities: Natural Gas Available, Electricity Available, Cable Available, Storm Sewer, None

Waterfront Features: Pond

Interior Features: Broadband

Association Amenities: Pets Allowed, Trail(s)

WaterSource: Public

Lot Features: Level, Site Condo, Buildable, Sidewalk

Fees & Taxes

Tax Assessed Value: \$100,000

Association Fee Frequency: Monthly

Association Fee: \$125

Tax Year: 2024

Tax Annual Amount: \$2,500

Association Fee Includes: Lawn/Yard Care, Trash

School Information

High School District: Saugatuck-Douglas

Middle Or Junior School: Saugatuck Middle School

HighSchool: Saugatuck High School

Elementary School: Douglas Elementary School

Call us now

Miscellaneous

CrossStreet: Blue Star Highway and Hamilton

Listing Terms: Cash, Conventional

Call us now



Phone: (231)730-8781
Email: tuckerbennerteam@gmail.com
Address: 2747 Lakeshore Drive, Twin Lake, MI 49457

