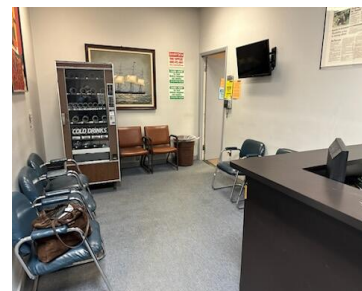


15819, SCHOOLCRAFT, DETROIT, MI, 48227

<https://tuckerbenner.com>



Large 7000 sft industrial building has 3 bathrooms lots of office space conference rooms and a large warehouse arae.

- 3 baths
- Office
- Commercial Sale
- Active



Basics

Category: Commercial Sale

Status: Active

Lot size: 0.14 sq ft

Bathrooms Full: 3

Business Type: Other, Professional/Office, Professional Service

Type: Office

Bathrooms: 3 baths

Year built: 1970

Lot Size Acres: 0.14 acres

County: Wayne

Call us now



Phone: (231)730-8781

Email: tuckerbennerteam@gmail.com

Address: 2747 Lakeshore Drive, Twin Lake, MI 49457



Building Details

Building Area Total: 7000 sq ft

Heating: Forced Air

Number Of Buildings: 1

Number Of Units Total: 1

StoriesTotal: 5927

Amenities & Features

Inclusions: Real Estate **Utilities:** Natural Gas Available, Electricity Available, Natural Gas Connected, Electricity Connected

Fees & Taxes

Tax Assessed Value: \$37,421

Tax Year: 2025

Tax Annual Amount: \$5,000

School Information

High School District: Detroit

Miscellaneous

CrossStreet: Greenfield

Listing Terms: Conventional, Cash

Call us now



Phone: (231)730-8781

Email: tuckerbennerteam@gmail.com

Address: 2747 Lakeshore Drive, Twin Lake, MI 49457

