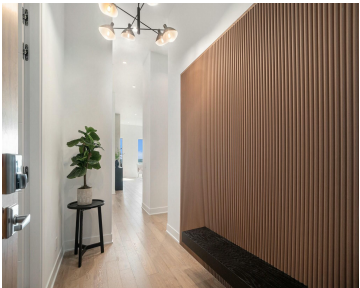
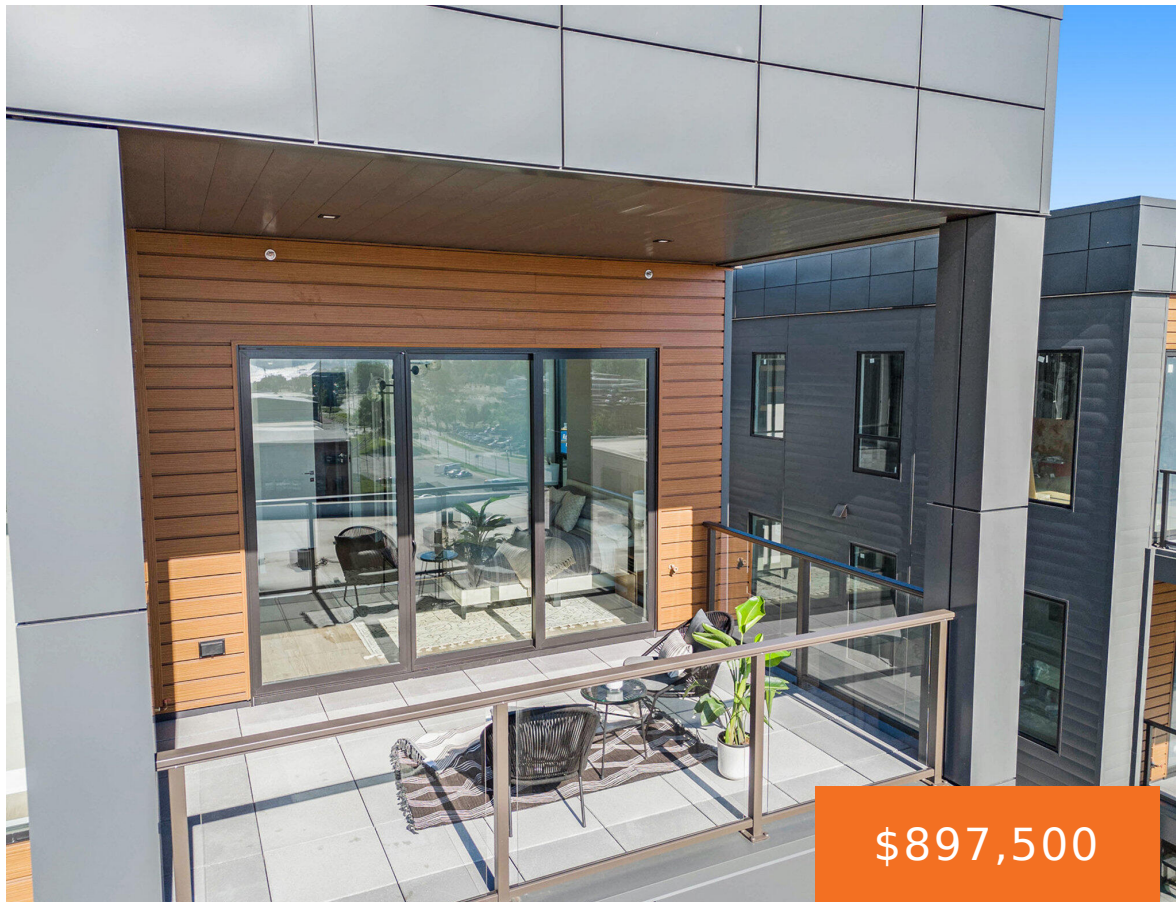


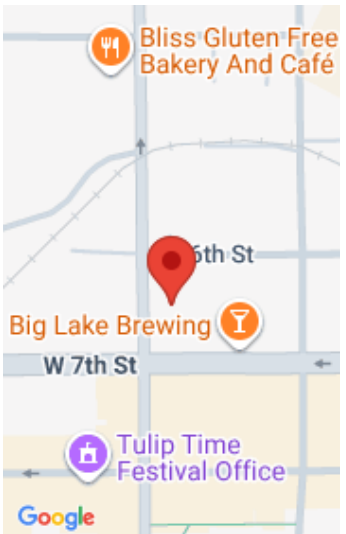
159, RIVER, HOLLAND, MI, 49423

https://tuckerbenner.com



Discover an unparalleled lifestyle in this under-construction luxury condominium, designed for those who appreciate elegance, convenience, and modern living. Enjoy the ease of two secured parking spaces, ensuring both comfort and security in the city’s vibrant core. Inside, the possibilities are yours—custom finishes are still available, allowing you to personalize your space to perfection. The [...]

- 2 beds
- 2 baths
- Condominium
- Residential
- Active
- 1501 sq ft



Call us now

Phone: (231)730-8781
Email: tuckerbennerteam@gmail.com
Address: 2747 Lakeshore Drive, Twin Lake, MI 49457

Basics

Category: Residential

Status: Active

Bathrooms: 2 baths

Lot size: 0.7 sq ft

Subdivision Name: Towers on River

Lot Size Acres: 0.7 acres

County: Ottawa

Type: Condominium

Bedrooms: 2 beds

Area: 1501 sq ft

Year built: 2025

Bathrooms Full: 2

Rooms Total: 9

Building Details

Building Area Total: 1501 sq ft

Construction Materials: Concrete, HardiPlank Type, Stone, Other

Architectural Style: Contemporary

Sewer: Public

Heating: Forced Air, Heat Pump

Stories: 5

Roof: Other, Rubber

Basement: Other

Amenities & Features

Laundry Features: In Unit

Utilities: Natural Gas Available, Electricity Available, Cable Available, Natural Gas Connected, Cable Connected

Parking Features: Attached

Garage Spaces: 1

Appliances: Dishwasher, Disposal, Dryer, Microwave, Oven, Refrigerator, Washer

Lot Features: Level, Sidewalk

Patio And Porch Features: Deck, Patio

Fireplaces Total: 1

Flooring: Carpet, Ceramic Tile, Laminate, Other, Tile, Vinyl

Association Amenities: Fitness Center, Pets Allowed, Storage, Other

Fireplace Features: Living Room

WaterSource: Public

Interior Features: Elevator, Center Island, Eat-in Kitchen

Window Features: Screens, Insulated Windows

Exterior Features: Balcony

Cooling: Central Air, SEER 13 or Greater

Call us now

Fees & Taxes

Tax Assessed Value: \$211,243

Association Fee Frequency: Monthly

Association Fee: \$305.12

Tax Year: 2025

Tax Annual Amount: \$13,218.83

Association Fee Includes: Other, Water, Trash, Snow Removal, Sewer, Lawn/Yard Care, Heat

School Information

High School District: Holland

Miscellaneous

Road Surface Type: Paved

CrossStreet: 6th and 7th

Listing Terms: Cash, Conventional

Call us now