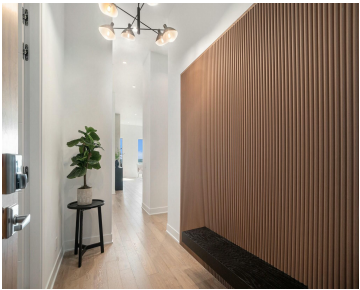


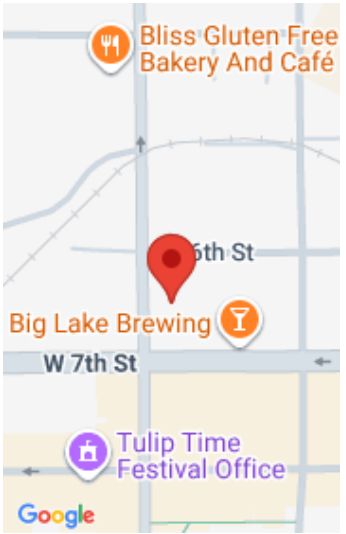
159, RIVER, HOLLAND, MI, 49423

https://tuckerbenner.com



Luxury Downtown Holland Condo – Limited Availability! Experience the perfect blend of modern luxury and convenience in this stunning 2-bedroom, 2-bathroom condo on the 5th floor of a brand-new, high-end building in downtown Holland. With 12-ft finished ceilings and floor-to-ceiling windows, this residence offers an airy, open feel with breathtaking Lake Macatawa views. Enjoy top-tier [...]

- 2 beds
- 2 baths
- Condominium
- Residential
- Active
- 1450 sq ft



Call us now

Phone: (231)730-8781  
Email: tuckerbennerteam@gmail.com  
Address: 2747 Lakeshore Drive, Twin Lake, MI 49457

# Basics

**Category:** Residential

**Status:** Active

**Bathrooms:** 2 baths

**Lot size:** 0.68 sq ft

**Subdivision Name:** Towers on River

**Lot Size Acres:** 0.68 acres

**County:** Ottawa

**Type:** Condominium

**Bedrooms:** 2 beds

**Area:** 1450 sq ft

**Year built:** 2024

**Bathrooms Full:** 2

**Rooms Total:** 9

# Building Details

**Building Area Total:** 1450 sq ft

**Construction Materials:** Concrete, HardiPlank Type, Stone, Other

**Architectural Style:** Contemporary

**Sewer:** Public Sewer

**Heating:** Forced Air, Heat Pump

**Stories:** 5

**Basement:** Other

# Amenities & Features

**Laundry Features:** In Unit

**Utilities:** Natural Gas Available, Electricity Available, Cable Available, Natural Gas Connected, Cable Connected, Public Water, Public Sewer

**Association Amenities:** Fitness Center, Pets Allowed, Storage, Other

**Parking Features:** Attached

**Garage Spaces:** 1

**WaterSource:** Public

**Appliances:** Washer, Refrigerator, Oven, Microwave, Dryer, Disposal, Dishwasher

**Interior Features:** Ceramic Floor, Elevator, Laminate Floor, Kitchen Island, Eat-in Kitchen

**Lot Features:** Level, Sidewalk

**Window Features:** Screens, Insulated Windows

**Exterior Features:** Patio, Deck(s)

**Fireplaces Total:** 1

**Cooling:** SEER 13 or Greater, Central Air

## Call us now

## Fees & Taxes

**Tax Assessed Value:** \$254,420

**Association Fee Frequency:** Monthly

**Association Fee:** \$368.11

**Tax Year:** 2024

**Tax Annual Amount:** \$15,937.10

**Association Fee Includes:** Other, Water, Trash, Snow Removal, Sewer, Lawn/Yard Care, Heat

## School Information

**High School District:** Holland

## Miscellaneous

**Road Surface Type:** Paved

**CrossStreet:** 6th and 7th

**Listing Terms:** Cash, Conventional

**Call us now**