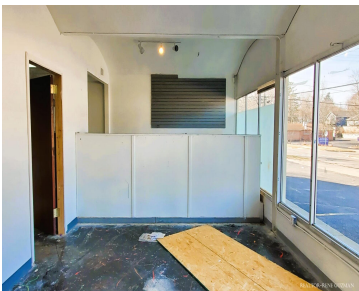


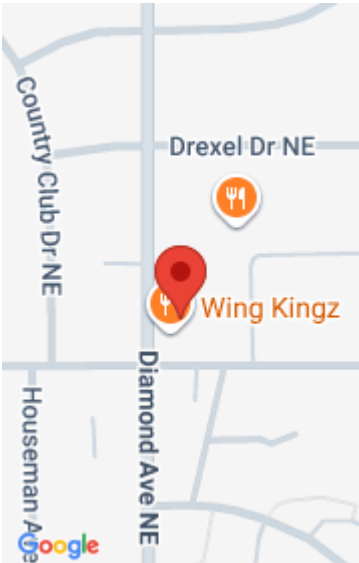
1612, DIAMOND, GRAND RAPIDS, MI, 49505

https://tuckerbenner.com



Ready to set up shop? This 2,000 sq ft space in Grand Rapids, MI is calling your name! With a welcoming front desk and lobby, it's primed for retail—perfect for customers walking in. Beyond that, divided spaces and a bonus room offer flexibility—last tenant rocked it as a spray painting store, so manufacturing's on the [...]

- 0 baths
- Industrial
- Commercial Lease
- Active



Basics

Category: Commercial Lease

Type: Industrial

Status: Active

Bathrooms: 0 baths

Lot size: 0.51 sq ft

Year built: 1964

Lot Size Acres: 0.51 acres

Business Type: Professional/Office, Retail, Manufacturing

County: Kent

Building Details

Building Area Total: 2000 sq ft

Construction Materials: Concrete, Vinyl Siding, Wood Siding, Brick

Heating: Forced Air

Foundation Details: Combination

Number Of Buildings: 1

Amenities & Features

Utilities: Electricity Available, Natural Gas Connected, Electricity Connected

Fireplaces Total: 1

Fees & Taxes

Tax Assessed Value: \$173,073

Tax Year: 2024

School Information

High School District: Grand Rapids

Call us now

Miscellaneous

CrossStreet: Sweet St NE

Call us now



Phone: (231)730-8781
Email: tuckerbennerteam@gmail.com
Address: 2747 Lakeshore Drive, Twin Lake, MI 49457

