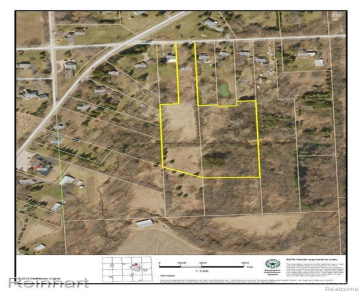
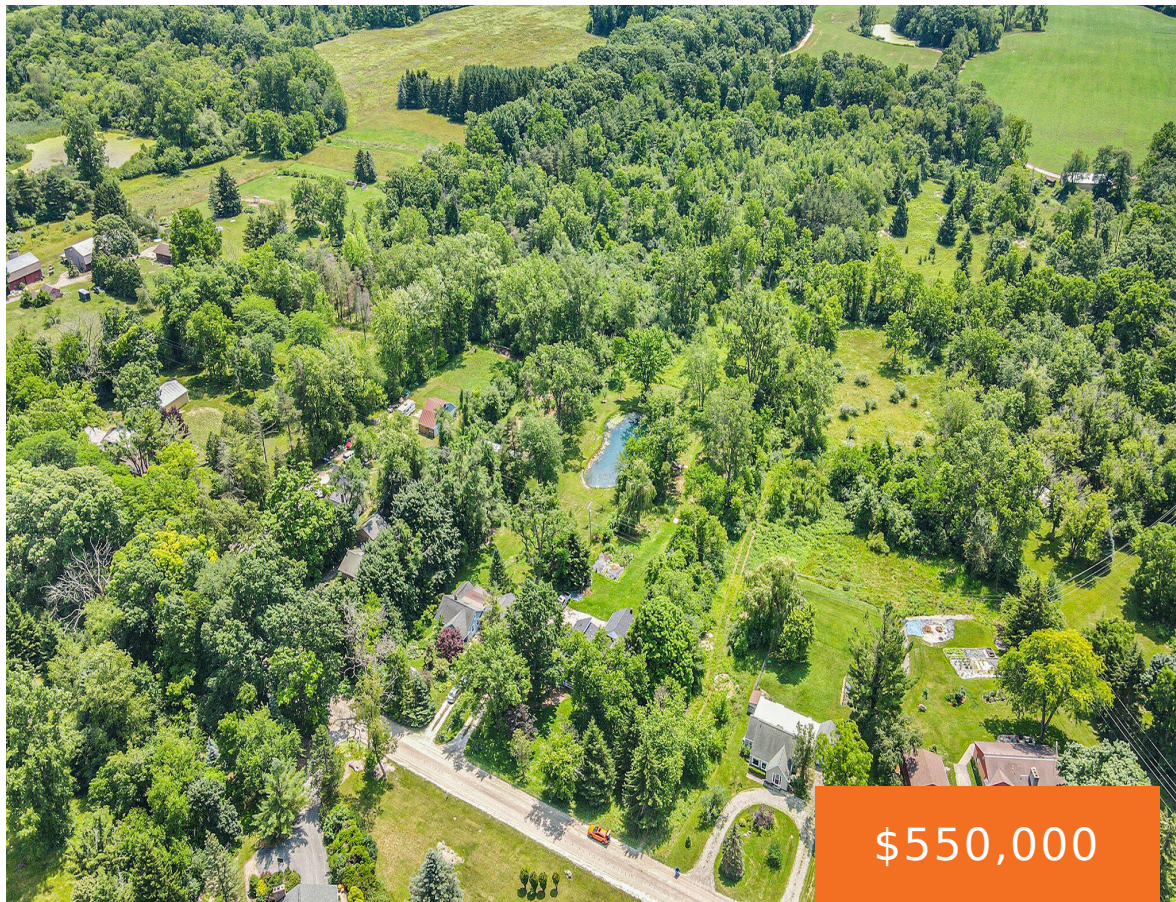


# 16881696, WARREN, ANN ARBOR, MI, 48105

<https://tuckerbenner.com>



Incredible opportunity to build your dream home, hobby farm or private estate surrounded by mature trees on a walkout site. With nearly 7 acres of rolling hills and a bubbling creek, this property offers the ideal location for your luxury dream home. It’s minutes from downtown Ann Arbor while still feeling miles away from it [...]

- 0 baths
- Acreage
- Land
- Active



# Basics

**Category:** Land

**Status:** Active

**Lot size:** 6.8 sq ft

**County:** Washtenaw

**Type:** Acreage

**Bathrooms:** 0 baths

**Lot Size Acres:** 6.8 acres

# Amenities & Features

**Utilities:** Natural Gas Available, Electricity Available, Cable Available, Electricity Connected

**Waterfront Features:** Stream/Creek

**Lot Features:** Buildable

# Fees & Taxes

**Tax Assessed Value:** \$10,718

**Tax Year:** 2025

**Tax Annual Amount:** \$356

# School Information

**High School District:** Ann Arbor

# Miscellaneous

**CrossStreet:** Pontiac Trail and Warren Rd

**Listing Terms:** Cash, Conventional

Call us now