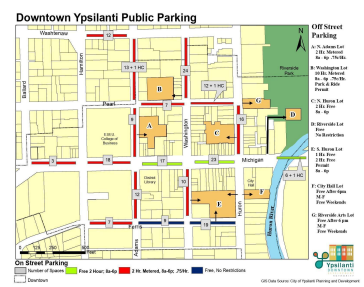
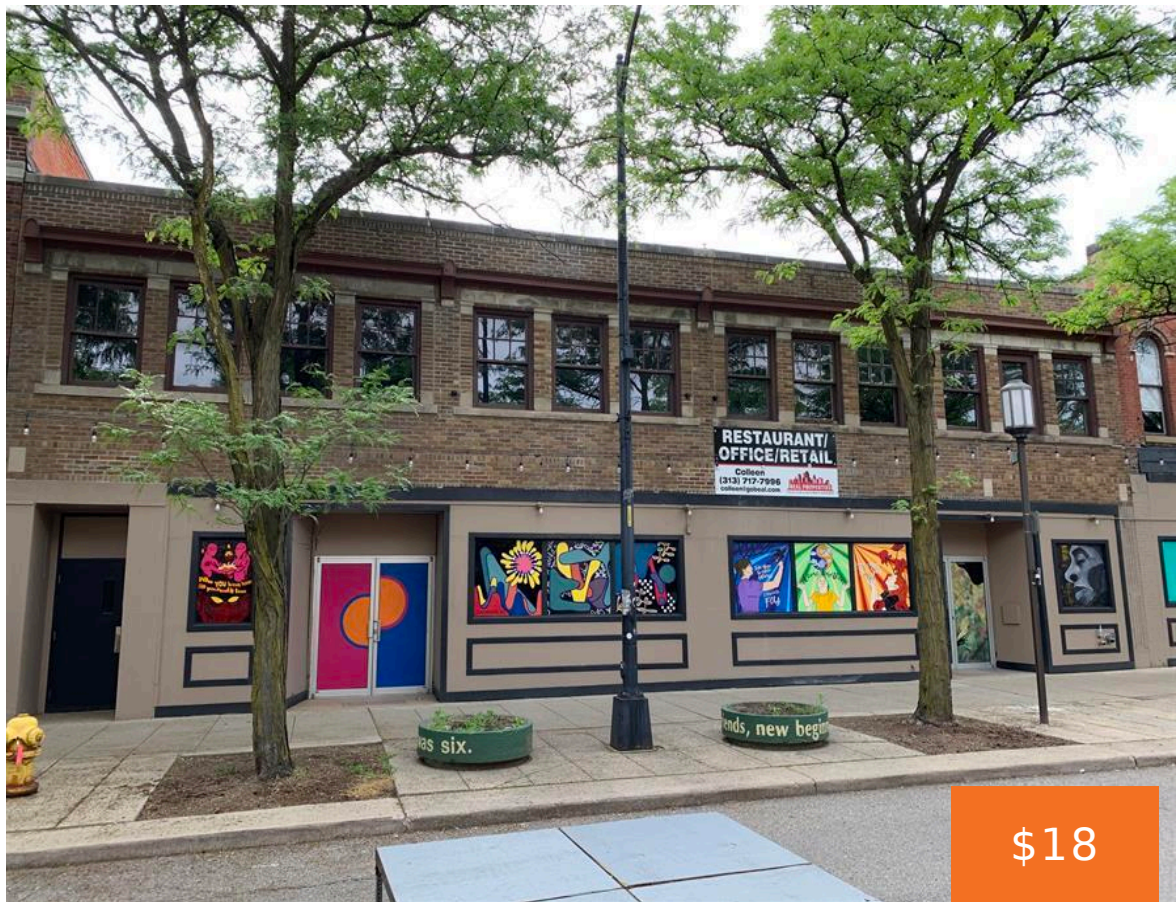


17, WASHINGTON, YPSILANTI, MI, 48197

https://tuckerbenner.com



17 N. Washington Ste. 200 is a prime location for businesses in the heart of downtown Ypsilanti. The second level building is ready for your buildout, with a 6,000 square foot footprint. You'll have plenty of room to work and live! There's also a large basement available for an additional cost - perfect for storage [...]

- 0 baths
- Retail/Commercial
- Commercial Lease
- Active



# Basics

**Category:** Commercial Lease  
**Status:** Active  
**Lot size:** 0.24 sq ft  
**Business Type:** Restaurant

**Type:** Retail/Commercial  
**Bathrooms:** 0 baths  
**Lot Size Acres:** 0.24 acres  
**County:** Washtenaw

# Building Details

**Building Area Total:** 6000 sq ft  
**Number Of Buildings:** 1  
**Heating:** None

# Amenities & Features

**Utilities:** None  
**Fireplaces Total:** 1  
**WaterSource:** None

# Fees & Taxes

**Tax Assessed Value:** \$192,113  
**Tax Year:** 2023

# School Information

**High School District:** Ypsilanti

# Miscellaneous

**CrossStreet:** 17 N. Washington

Call us now