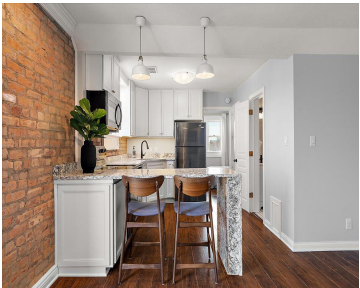
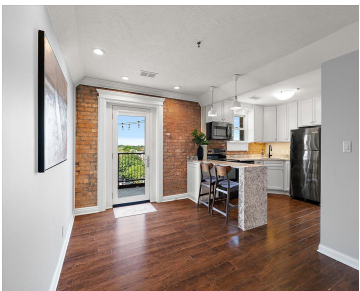
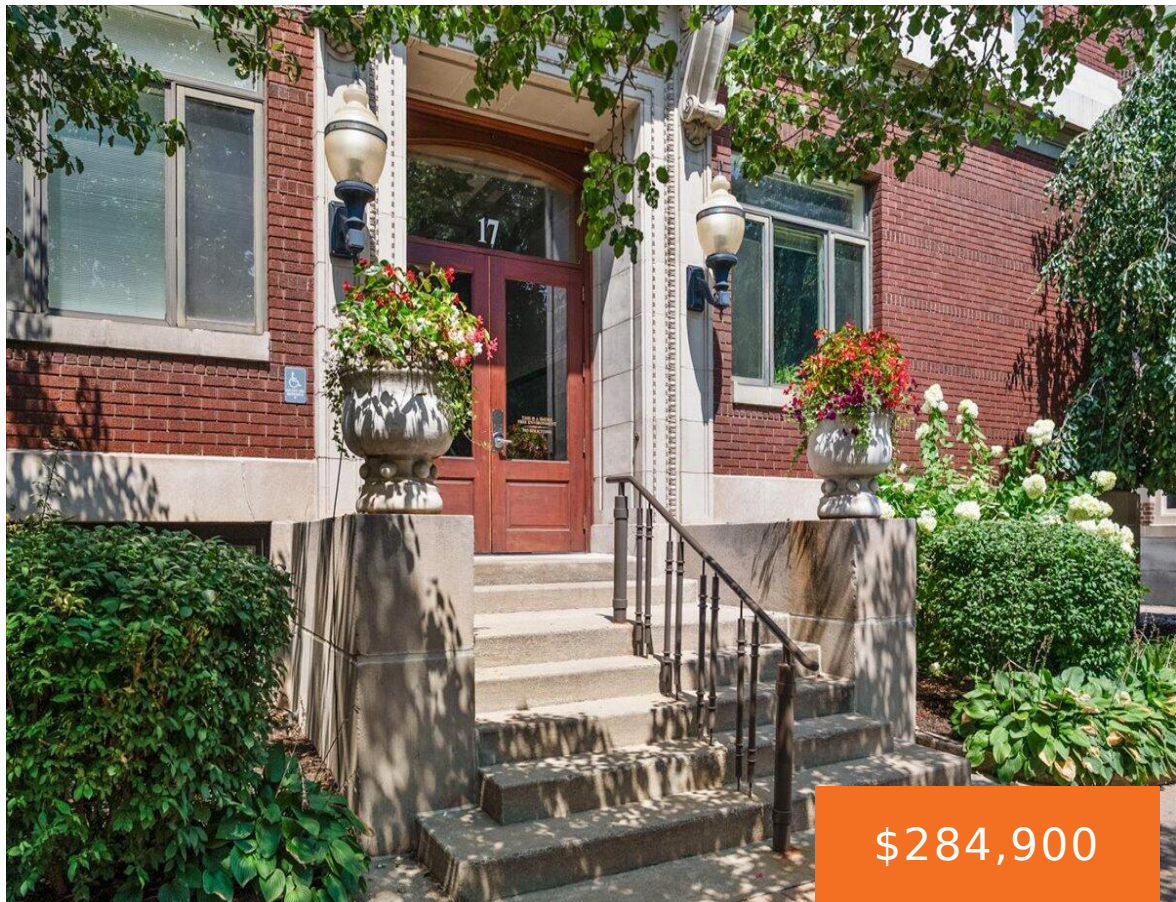


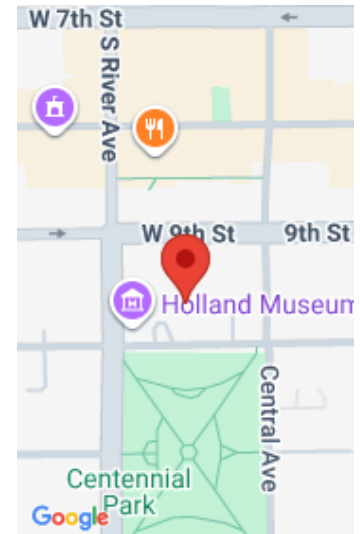
17, 10TH, HOLLAND, MI, 49423

https://tuckerbenner.com



Completely remodeled 1-bed, 1-bath condo in historic Centennial Park Place, across from Centennial Park in downtown Holland! Step into luxury with the kitchen featuring a waterfall Quartz countertop, black stain steel appliances, and quality cabinetry from local Deleeuw Lumber. This 4th-floor unit offers an unrivaled city view from its private balcony facing downtown. Features updated [...]

- 1 bed
- 1 bath
- Condominium
- Residential
- Active
- 450 sq ft



Call us now

Phone: (231)730-8781  
Email: tuckerbennerteam@gmail.com  
Address: 2747 Lakeshore Drive, Twin Lake, MI 49457

# Basics

**Category:** Residential  
**Status:** Active  
**Bathrooms:** 1 bath  
**Lot size:** 0.25 sq ft  
**Bathrooms Full:** 1  
**Rooms Total:** 4

**Type:** Condominium  
**Bedrooms:** 1 bed  
**Area:** 450 sq ft  
**Year built:** 1998  
**Lot Size Acres:** 0.25 acres  
**County:** Ottawa

# Building Details

**Building Area Total:** 450 sq ft  
**Architectural Style:** Other  
**Heating:** Forced Air, Radiant  
**Roof:** Other, Rubber

**Construction Materials:** Brick  
**Sewer:** Public  
**Stories:** 1  
**Basement:** Other

# Amenities & Features

**Laundry Features:** Common Area, Laundry Room, Upper Level  
**Association Amenities:** Laundry, Security  
**Appliances:** Dishwasher, Oven, Range, Refrigerator  
**Window Features:** Replacement  
**Cooling:** Central Air

**Utilities:** Natural Gas Available, Electricity Available, Cable Available, Natural Gas Connected, Storm Sewer, High-Speed Internet  
**WaterSource:** Public  
**Interior Features:** Broadband  
**Exterior Features:** Balcony

# Fees & Taxes

Call us now

**Tax Assessed Value:** \$55,243

**Association Fee:** \$215

**Tax Annual Amount:** \$3,368.97

**Association Fee Frequency:** Monthly

**Tax Year:** 2024

**Association Fee Includes:** Water, Trash, Snow Removal, Sewer, Lawn/Yard Care, Heat

## School Information

**High School District:** Holland

## Miscellaneous

**Road Surface Type:** Paved

**CrossStreet:** Central Ave and River Ave

**Listing Terms:** Cash, Conventional

**Call us now**



Phone: (231)730-8781

Email: tuckerbennerteam@gmail.com

Address: 2747 Lakeshore Drive, Twin Lake, MI 49457

