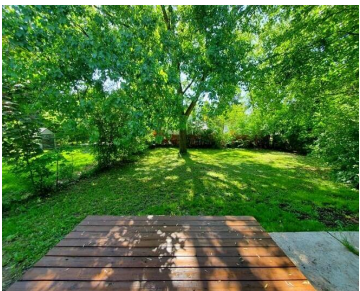
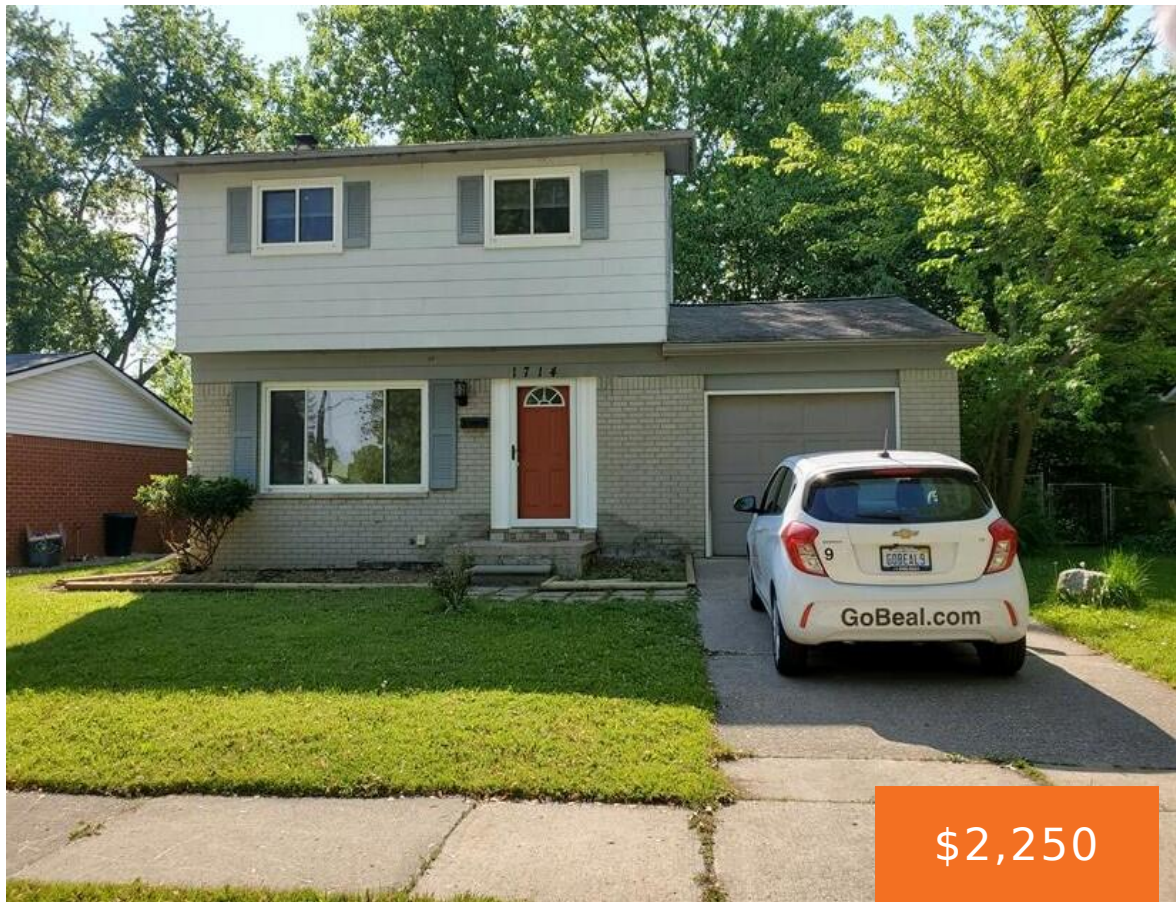


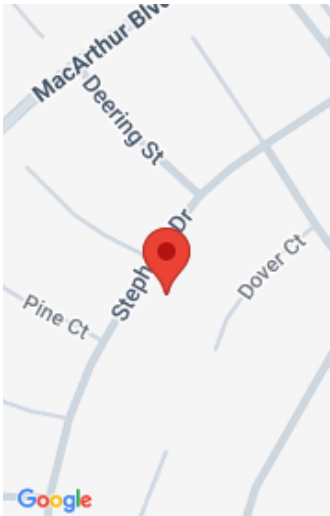
1714, STEPHENS, YPSILANTI, MI, 48198

https://tuckerbenner.com



Nestled in the serene neighborhood of Ypsilanti, MI, 1714 Stephens Dr. unveils a charming 3-bedroom, 1.5-bathroom sanctuary, available for lease starting August 1st. Recently renovated, this home boasts gleaming wood floors and elegant ceiling fans gracing the living room and bedrooms, while the kitchen showcases modern appliances for culinary enthusiasts. The bathroom exudes luxury with [...]

- 3 beds
- 2 baths
- Single Family Residence
- Residential Lease
- Active
- 1600 sq ft



# Basics

<b>Category:</b> Residential Lease	<b>Type:</b> Single Family Residence
<b>Status:</b> Active	<b>Bedrooms:</b> 3 beds
<b>Bathrooms:</b> 2 baths	<b>Area:</b> 1600 sq ft
<b>Lot size:</b> 0.17 sq ft	<b>Year built:</b> 1980
<b>Bathrooms Full:</b> 1	<b>Lot Size Acres:</b> 0.17 acres
<b>County:</b> Washtenaw	<b>Bathrooms Half:</b> 1

# Building Details

<b>Architectural Style:</b> Bi-Level	<b>Heating:</b> Forced Air
--------------------------------------	----------------------------

# Amenities & Features

<b>Parking Features:</b> Attached	<b>Garage Spaces:</b> 1
-----------------------------------	-------------------------

# Fees & Taxes

<b>Tax Year:</b> 2024
-----------------------

# School Information

<b>High School District:</b> Willow Run
---

# Miscellaneous

<b>CrossStreet:</b> Wiard Road
--------------------------------

## Call us now