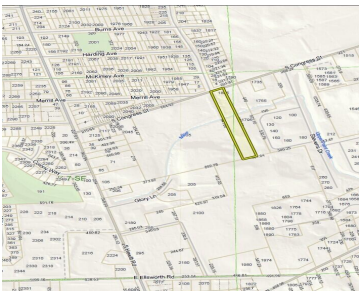
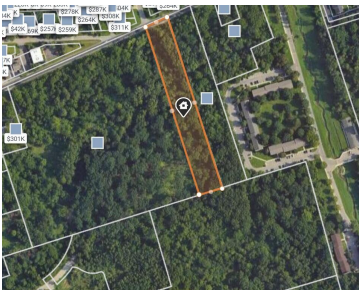


1805, CONGRESS, YPSILANTI, MI, 48197

https://tuckerbenner.com



Prime Real Estate available for low-density, multiple-family dwelling structure right in the heart of Ypsilanti. Close to all shopping, expressways and daily conveniences

- 0 baths
- Lot
- Land
- Active



---

# Basics

**Category:** Land  
**Status:** Active  
**Lot size:** 2.9 sq ft  
**County:** Washtenaw

**Type:** Lot  
**Bathrooms:** 0 baths  
**Lot Size Acres:** 2.9 acres

---

# Building Details

**Sewer:** Public Sewer

---

# Amenities & Features

**Utilities:** Natural Gas Available, Electricity Available, Cable Available, Phone Available, Storm Sewer, None  
**WaterSource:** Public

---

# Fees & Taxes

**Tax Assessed Value:** \$12,499  
**Tax Annual Amount:** \$806  
**Tax Year:** 2025

---

# School Information

**High School District:** Ypsilanti

---

# Miscellaneous

**CrossStreet:** Congress and Hewitt  
**Listing Terms:** Cash, Conventional

Call us now