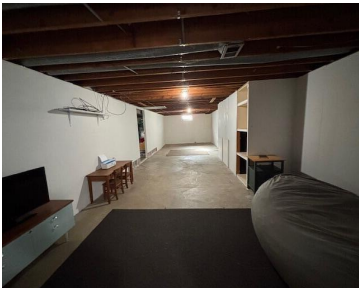


1819, WOODLAND, PORTAGE, MI, 49024

<https://tuckerbenner.com>



\$249,900



Charming 3 bedroom ranch near Woodland Elementary with lots of curb appeal. Welcome to this inviting 3 bedroom, 1-1/2 bath home, offering 1151 sq. ft. of comfortable living space in a quiet, friendly neighborhood. Step inside to a cozy living room featuring a wood burning fireplace, perfect for relaxing evenings. The kitchen and dining room [...]

- 3 beds
- 2 baths
- Single Family Residence
- Residential
- Active
- 1151 sq ft



Call us now

Phone: (231)730-8781

Email: tuckerbennerteam@gmail.com

Address: 2747 Lakeshore Drive, Twin Lake, MI 49457



# Basics

<b>Category:</b> Residential	<b>Type:</b> Single Family Residence
<b>Status:</b> Active	<b>Bedrooms:</b> 3 beds
<b>Bathrooms:</b> 2 baths	<b>Area:</b> 1151 sq ft
<b>Lot size:</b> 0.22 sq ft	<b>Year built:</b> 1965
<b>Bathrooms Full:</b> 1	<b>Lot Size Acres:</b> 0.22 acres
<b>Rooms Total:</b> 7	<b>County:</b> Kalamazoo
<b>Bathrooms Half:</b> 1	

# Building Details

<b>Building Area Total:</b> 1151 sq ft	<b>Construction Materials:</b> Aluminum Siding
<b>Architectural Style:</b> Ranch	<b>Sewer:</b> Public
<b>Heating:</b> Forced Air	<b>Stories:</b> 1
<b>Roof:</b> Shingle	<b>Basement:</b> Full

# Amenities & Features

<b>Laundry Features:</b> Electric Dryer Hookup, In Basement, Washer Hookup	<b>Flooring:</b> Wood
<b>Utilities:</b> Phone Available, Natural Gas Available, Electricity Available, Cable Available, Natural Gas Connected, High-Speed Internet	<b>Fencing:</b> Fenced Back
<b>Parking Features:</b> Attached	<b>Fireplace Features:</b> Living Room, Wood Burning
<b>Garage Spaces:</b> 2	<b>WaterSource:</b> Public
<b>Appliances:</b> Dishwasher, Disposal, Dryer, Microwave, Range, Refrigerator, Washer	<b>Interior Features:</b> Ceiling Fan(s), Broadband, Garage Door Opener
<b>Lot Features:</b> Level, Sidewalk	<b>Window Features:</b> Window Treatments
<b>Patio And Porch Features:</b> Deck	<b>Fireplaces Total:</b> 1
<b>Cooling:</b> Central Air	

## Call us now

---

# Fees & Taxes

**Tax Assessed Value:** \$90,763  
**Tax Annual Amount:** \$4,100.24

**Tax Year:** 2024

---

# School Information

**High School District:** Portage      **Elementary School:** Woodland Elementary School

---

# Miscellaneous

**Road Surface Type:** Paved      **CrossStreet:** Starbrook & Rockford  
**Listing Terms:** Cash, Conventional

**Call us now**