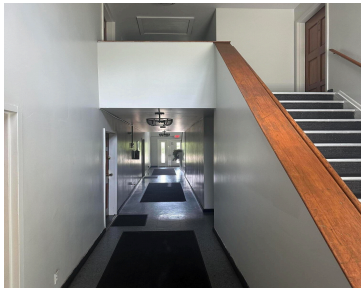


18333, SCHOOLCRAFT, DETROIT, MI, 48223

https://tuckerbenner.com



Discover this well-maintained 8-unit apartment building in a quiet, clean community setting. The property features (5) spacious one-bedroom units and (3) comfortable two-bedroom units, each designed with convenience and comfort in mind. Property Highlights: New boiler and hot water tank for reliable efficiency Coin-operated laundry facility on-site Cable ready units with intercom system Kitchens equipped [...]

- 8 baths
- Business
- Commercial Sale
- Active



Call us now

Phone: (231)730-8781
Email: tuckerbennerteam@gmail.com
Address: 2747 Lakeshore Drive, Twin Lake, MI 49457

Basics

Category: Commercial Sale
Status: Active
Lot size: 0.23 sq ft
Subdivision Name: Sunnybrook Gardens 1
Lot Size Acres: 0.23 acres
County: Wayne

Type: Business
Bathrooms: 8 baths
Year built: 1958
Bathrooms Full: 8
Business Type: Other

Building Details

Building Area Total: 6480 sq ft
Construction Materials: Brick
StoriesTotal: 2
Number Of Buildings: 1

Number Of Units Total: 8
Heating: Baseboard
Foundation Details: Slab

Amenities & Features

Inclusions: Real Estate, Furniture
Cooling: Wall Unit(s)

Utilities: Natural Gas Available, Electricity Available, Cable Available, Natural Gas Connected, Electricity Connected, Cable Connected

Fees & Taxes

Tax Assessed Value: \$44,868
Tax Annual Amount: \$9,926

Tax Year: 2025

School Information

Call us now

High School District: Detroit

Miscellaneous

Road Surface Type: Paved

CrossStreet: Schoolcraft and Southfield Fwy

Listing Terms: Conventional, Cash

Tenant Pays: Electric

Call us now