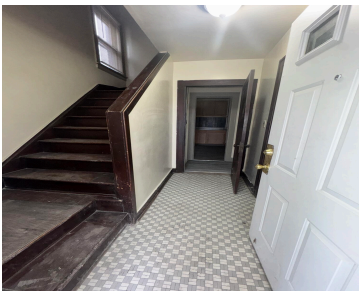
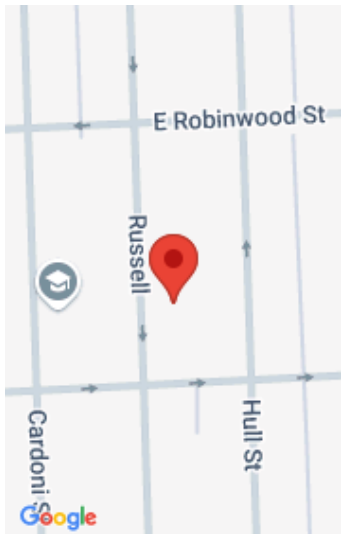


**18540, RUSSELL, HIGHLAND PARK, MI, 48203**  
<https://tuckerbenner.com>



This unit is available for a 12-month lease starting February 01, 2025, providing a great opportunity to make this lovely space your new home. Don't miss out on the chance to lease this wonderful duplex unit in Highland Park. Schedule a showing today! The security deposit is 1.5 times the amount of rent. Security deposit [...]

- 2 beds
- 2 baths
- Duplex
- Residential Lease
- Active
- 1834 sq ft



**Call us now**

Phone: (231)730-8781  
Email: [tuckerbennerteam@gmail.com](mailto:tuckerbennerteam@gmail.com)  
Address: 2747 Lakeshore Drive, Twin Lake, MI 49457

# Basics

**Category:** Residential Lease  
**Status:** Active  
**Bathrooms:** 2 baths  
**Lot size:** 0.1 sq ft  
**Subdivision Name:** Cadillac Heights Sub Of N E 1/4 Sec 12  
**Lot Size Acres:** 0.1 acres  
**County:** Wayne

**Type:** Duplex  
**Bedrooms:** 2 beds  
**Area:** 1834 sq ft  
**Year built:** 1928  
**Bathrooms Full:** 1  
**Rooms Total:** 5  
**Bathrooms Half:** 1

# Building Details

**Architectural Style:** Colonial  
**Stories:** 2

**Heating:** Forced Air  
**Basement:** Crawl Space

# Amenities & Features

**Parking Features:** Detached  
**Fireplaces Total:** 50

**Garage Spaces:** 2

# School Information

**High School District:** Highland Park  
**Middle Or Junior School:** Nolan Elementary-Middle School

**HighSchool:** Pershing High School  
**Elementary School:** Nolan Elementary-Middle School

# Miscellaneous

**CrossStreet:** Grixdale E

Call us now