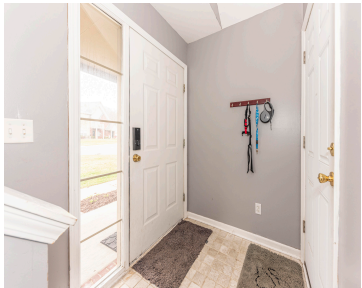
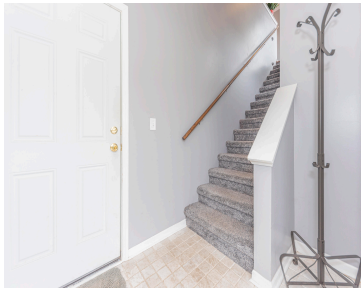


# 1857, ADDINGTON, ANN ARBOR, MI, 48108

<https://tuckerbenner.com>



Gorgeous move-in ready raised ranch style condo in desirable Woodside Meadows. You'll love the real hardwood flooring throughout the living area. Updated galley kitchen with gas stove, newer stainless appliances, granite counters, breakfast bar and tiled splash. Light filled open floor plan with fireplace(electric) , vaulted ceilings and balcony. Owners suite with newer carpet features [...]

- 2 beds
- 2 baths
- Condominium
- Residential
- Active
- 1217 sq ft



# Basics

**Category:** Residential

**Status:** Active

**Bathrooms:** 2 baths

**Lot size:** 0 sq ft

**Subdivision Name:** Woodside Meadows

**Lot Size Acres:** 0 acres

**County:** Washtenaw

**Type:** Condominium

**Bedrooms:** 2 beds

**Area:** 1217 sq ft

**Year built:** 2003

**Bathrooms Full:** 2

**Rooms Total:** 8

# Building Details

**Building Area Total:** 1217 sq ft

**Construction Materials:** Brick, Vinyl Siding, Other

**Architectural Style:** Ranch

**Sewer:** Public

**Heating:** Forced Air

**Stories:** 1

**Roof:** Asphalt

**Basement:** Slab

# Amenities & Features

**Laundry Features:** Laundry Room

**Utilities:** Cable Available, Natural Gas Connected, Cable Connected, Storm Sewer

**Fireplace Features:** Living Room

**WaterSource:** Public

**Interior Features:** Ceiling Fan(s), Garage Door Opener

**Exterior Features:** Balcony

**Cooling:** Central Air

**Flooring:** Carpet, Ceramic Tile, Wood

**Parking Features:** Attached

**Garage Spaces:** 1

**Appliances:** Humidifier, Dishwasher, Disposal, Dryer, Microwave, Oven, Range, Refrigerator, Washer

**Window Features:** Screens, Window Treatments

**Fireplaces Total:** 1

Call us now

## Fees & Taxes

**Tax Assessed Value:** \$109,559  
**Tax Annual Amount:** \$4,468

**Tax Year:** 2024


## School Information

<b>High School District:</b> Ann Arbor	<b>HighSchool:</b> Huron High School
<b>Middle Or Junior School:</b> Scarlett Middle School	<b>Elementary School:</b> Carpenter Elementary School

## Miscellaneous

<b>Road Surface Type:</b> Paved	<b>CrossStreet:</b> Stone School
<b>Listing Terms:</b> Cash, FHA, VA Loan, Conventional	

Call us now



Phone: (231)730-8781  
Email: tuckerbennerteam@gmail.com  
Address: 2747 Lakeshore Drive, Twin Lake, MI 49457

