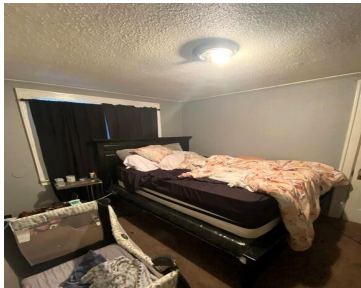


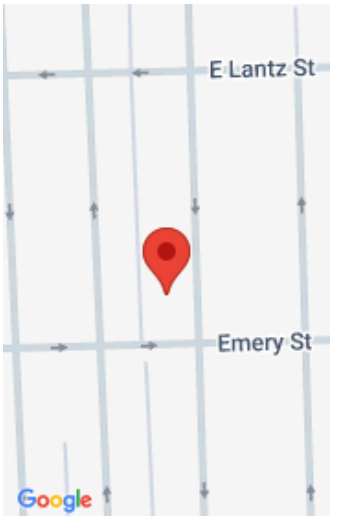
19325, CONLEY, DETROIT, MI, 48234

<https://tuckerbenner.com>



Charming 3-Bedroom Brick Ranch – Turnkey Investment Opportunity! Located on Detroit’s vibrant east side, this beautifully maintained 3-bedroom brick ranch is a fantastic investment opportunity. Featuring a recently updated kitchen and bath, this home blends modern comfort with timeless charm. A long-term CASH tenant is already in place, generating \$975 per month in rental income—making [...]

- 3 beds
- 2 baths
- Single Family Residence
- Residential
- Active
- 1080 sq ft



Basics

Category: Residential
Status: Active
Bathrooms: 2 baths
Lot size: 0.11 sq ft
Subdivision Name: Seymour & Troesters Polonia Park Sub
Lot Size Acres: 0.11 acres
County: Wayne

Type: Single Family Residence
Bedrooms: 3 beds
Area: 1080 sq ft
Year built: 1940
Bathrooms Full: 2
Rooms Total: 6

Building Details

Building Area Total: 1080 sq ft
Sewer: Public
Stories: 1
Basement: Full

Construction Materials: Brick
Heating: Forced Air
Roof: Asphalt

Amenities & Features

Laundry Features: Main Level
Parking Features: Detached
WaterSource: Public

Utilities: Natural Gas Available, Natural Gas Connected
Garage Spaces: 2

Fees & Taxes

Tax Assessed Value: \$5,082
Tax Annual Amount: \$633

Tax Year: 2024

School Information

Call us now

High School District: Detroit
Middle Or Junior School: Mason Academy

HighSchool: Perishing High School
Elementary School: Mason Academy

Miscellaneous

Road Surface Type: Paved

CrossStreet: Emery St

Listing Terms: Cash, Conventional

Call us now