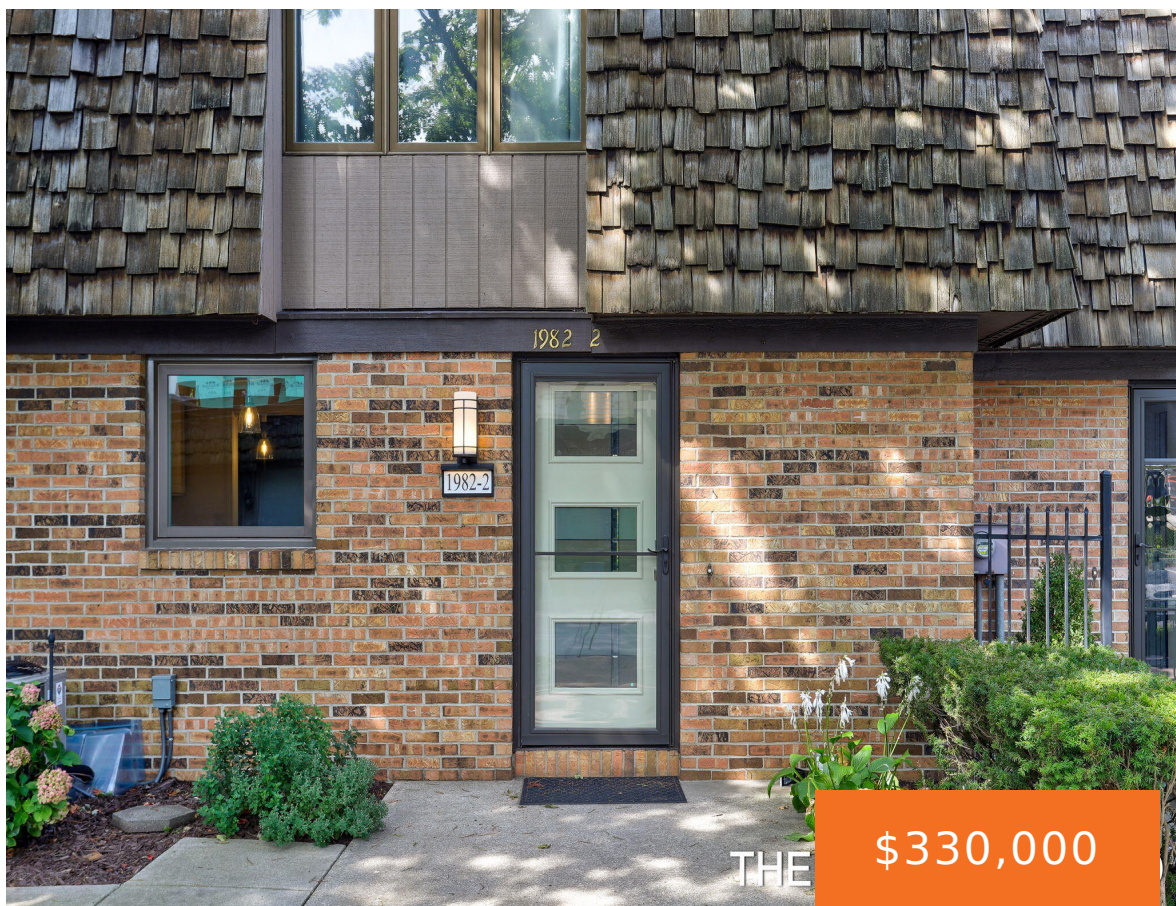


1982, SHORE, HOLLAND, MI, 49423

https://tuckerbenner.com



Own an Exceptional Opportunity in Belmont Square – Just Moments from Lake Macatawa, this meticulously maintained residence offers a rare opportunity to own a stylish and spacious unit just a short stroll from the launch docks of Lake Macatawa. Upstairs, you’ll find two generously proportioned bedrooms and a beautifully appointed full bath. The main level [...]

- 2 beds
- 2 baths
- Condominium
- Residential
- Active
- 2194 sq ft



Call us now

Phone: (231)730-8781
Email: tuckerbennerteam@gmail.com
Address: 2747 Lakeshore Drive, Twin Lake, MI 49457

Basics

Category: Residential

Status: Active

Bathrooms: 2 baths

Lot size: 0 sq ft

Bathrooms Full: 1

Rooms Total: 7

Bathrooms Half: 1

Type: Condominium

Bedrooms: 2 beds

Area: 2194 sq ft

Year built: 1978

Lot Size Acres: 0 acres

County: Ottawa

Building Details

Building Area Total: 1596 sq ft

Construction Materials: Brick, Wood Siding

Architectural Style: Traditional

Sewer: Public

Heating: Forced Air

Stories: 2

Basement: Full

Amenities & Features

Laundry Features: In Basement

Utilities: Phone Available, Natural Gas Available, Electricity Available, Cable Available, Phone Connected, Natural Gas Connected, Cable Connected, Storm Sewer, High-Speed Internet

Association Amenities: Other

Parking Features: Garage Door Opener, Detached

Waterfront Features: Lake

Garage Spaces: 1

WaterSource: Public

Appliances: Dishwasher, Dryer, Microwave, Range, Refrigerator, Washer

Interior Features: Ceiling Fan(s), Broadband, Garage Door Opener, Pantry

Lot Features: Level, Sidewalk, Wooded

Window Features: Screens, Insulated Windows

Patio And Porch Features: Patio, Porch(es)

Cooling: Central Air

Call us now

Fees & Taxes

Tax Assessed Value: \$110,636

Association Fee Frequency: Monthly

Association Fee: \$300

Tax Year: 2024

Tax Annual Amount: \$5,170

Association Fee Includes: Water, Trash, Snow Removal,
Sewer, Lawn/Yard Care

School Information

High School District: Holland

Miscellaneous

Road Surface Type: Paved

CrossStreet: South Shore Dr. & 1st Ave.

Listing Terms: Cash, Conventional

Call us now