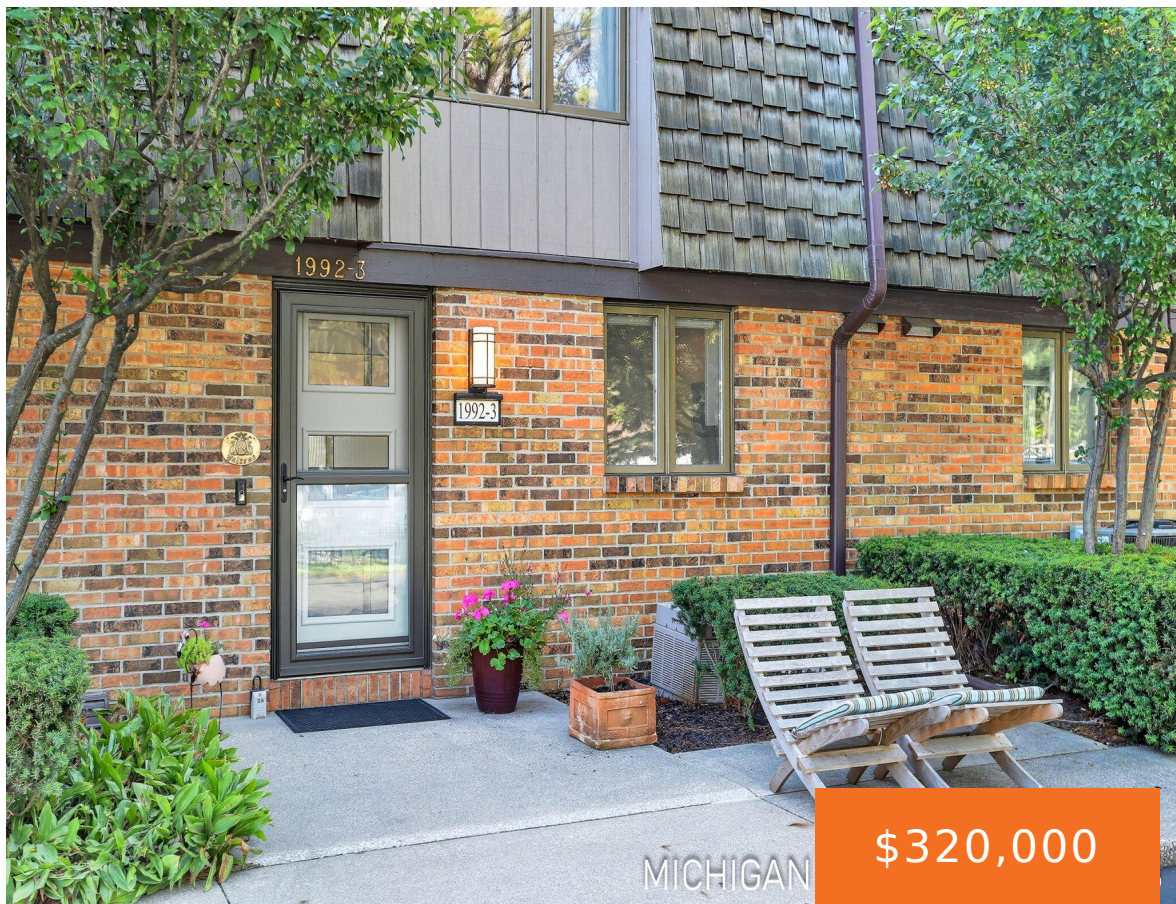


1992, SHORE, HOLLAND, MI, 49423

https://tuckerbenner.com



Incredible location, Macatawa Bay Yacht Club, Eldean’s Marina, Sanctuary Woods, Downtown Holland, Saugatuck and 3 Lake Macatawa access points all very close. This clean 2 bedroom 1& 1/2 bath two story condo is move in ready with newer baths, flooring and paint. This condo offer peak a boo views of the Lake. Come live the [...]

- 2 beds
- 2 baths
- Condominium
- Residential
- Active
- 1596 sq ft



Call us now

Phone: (231)730-8781  
Email: tuckerbennerteam@gmail.com  
Address: 2747 Lakeshore Drive, Twin Lake, MI 49457

---

# Basics

<b>Category:</b> Residential	<b>Type:</b> Condominium
<b>Status:</b> Active	<b>Bedrooms:</b> 2 beds
<b>Bathrooms:</b> 2 baths	<b>Area:</b> 1596 sq ft
<b>Lot size:</b> 0 sq ft	<b>Year built:</b> 1978
<b>Bathrooms Full:</b> 1	<b>Lot Size Acres:</b> 0 acres
<b>Rooms Total:</b> 7	<b>County:</b> Ottawa
<b>Bathrooms Half:</b> 1	

---

# Building Details

<b>Building Area Total:</b> 1596 sq ft	<b>Construction Materials:</b> Brick
<b>Architectural Style:</b> Traditional	<b>Sewer:</b> Public
<b>Heating:</b> Forced Air	<b>Stories:</b> 2
<b>Basement:</b> Full	

---

# Amenities & Features

<b>Laundry Features:</b> In Basement	<b>Flooring:</b> Carpet, Laminate
<b>Association Amenities:</b> Pets Allowed	<b>Waterfront Features:</b> Lake
<b>WaterSource:</b> Public	<b>Appliances:</b> Dishwasher, Microwave, Range, Refrigerator
<b>Patio And Porch Features:</b> Patio	<b>Cooling:</b> Central Air

---

# Fees & Taxes

Call us now

**Tax Assessed Value:** \$89,656

**Association Fee Frequency:** Monthly

**Association Fee:** \$380

**Tax Year:** 2025

**Tax Annual Amount:** \$2,701.96

**Association Fee Includes:** Water, Trash, Snow Removal,  
Lawn/Yard Care

## School Information

**High School District:** Holland

## Miscellaneous

**Road Surface Type:** Paved

**CrossStreet:** Saunders & 1st

**Listing Terms:** Cash, Conventional

**Call us now**



Phone: (231)730-8781

Email: tuckerbennerteam@gmail.com

Address: 2747 Lakeshore Drive, Twin Lake, MI 49457

