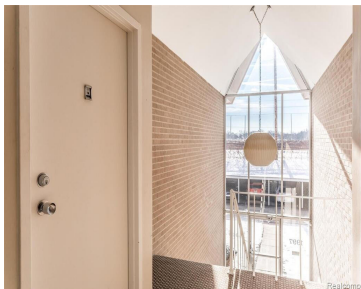
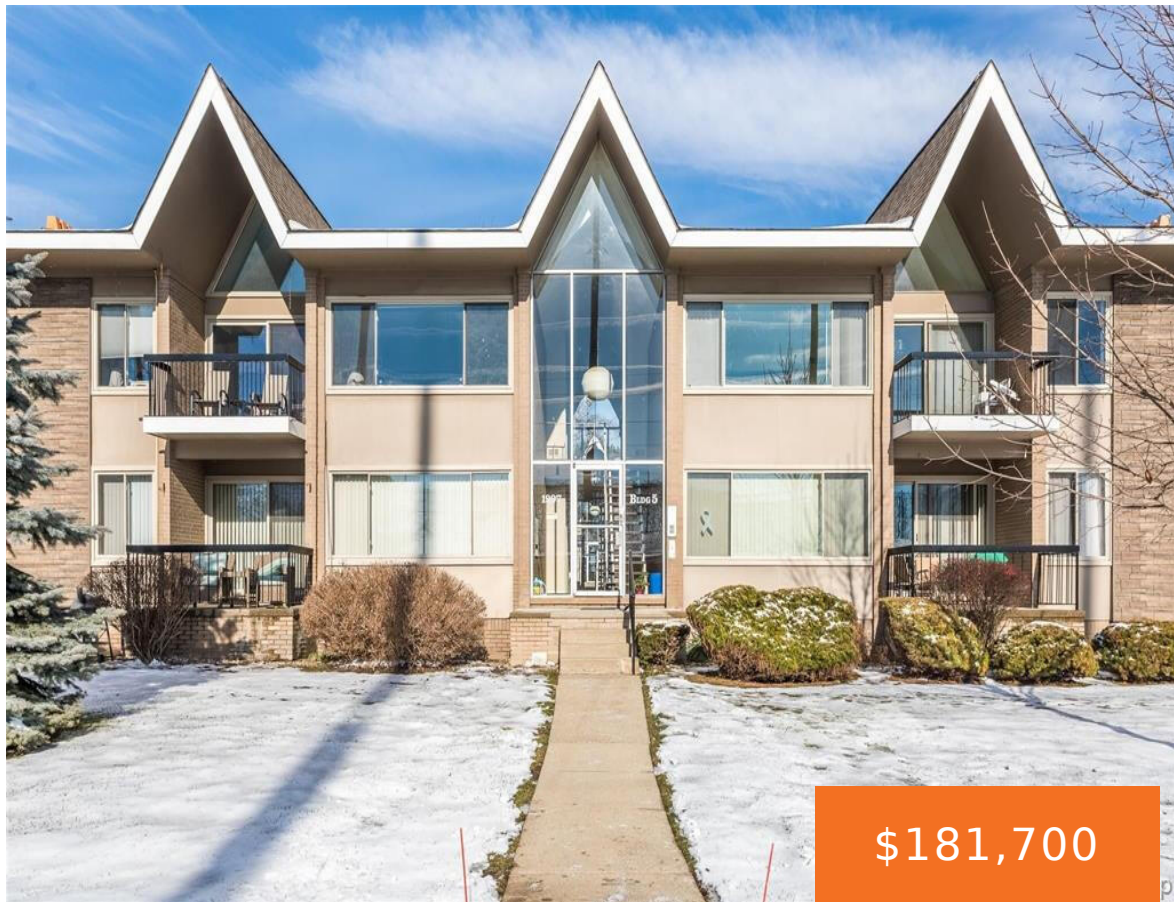


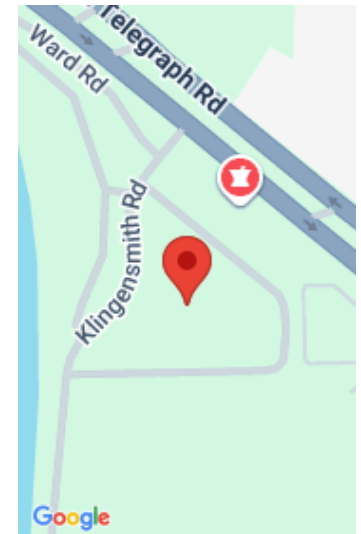
1997, KLINGENSMITH, BLOOMFIELD HILLS, MI, 48302

<https://tuckerbenner.com>



Welcome to effortless lake-area living in this bright and airy upper-level condo in Bloomfield Hills. Featuring vaulted ceilings and an open, spacious floor plan. Enjoy private all-sports lake access with an assigned boat slip, a private resident pool, and sun-drenched living spaces throughout. The home offers two bedrooms, two full baths, which includes a generous [...]

- 2 beds
- 2 baths
- Condominium
- Residential
- Active
- 1212 sq ft



Basics

Category: Residential
Status: Active
Bathrooms: 2 baths
Lot size: 6.37 sq ft
Subdivision Name: Square Lake Hills Condominium
Lot Size Acres: 6.37 acres
County: Oakland

Type: Condominium
Bedrooms: 2 beds
Area: 1212 sq ft
Year built: 1969
Bathrooms Full: 2
Rooms Total: 5

Building Details

Building Area Total: 1212 sq ft
Architectural Style: Contemporary, Mid-Century Modern, Ranch
Heating: Forced Air
Roof: Asphalt, Shingle

Construction Materials: Aluminum Siding, Brick, Stone
Sewer: Public
Stories: 1
Basement: Full, Other

Amenities & Features

Laundry Features: Common Area, In Basement, Laundry Room, Lower Level
Flooring: Carpet, Ceramic Tile, Linoleum
Association Amenities: Beach Area, End Unit, Laundry, Pets Allowed, Pool, Storage, Boat Launch
Waterfront Features: Lake
Appliances: Built-In Electric Oven, Cooktop, Dishwasher, Disposal, Oven
Window Features: Window Treatments
Exterior Features: Balcony

Pool Features: In Ground
Utilities: Cable Available, Cable Connected, High-Speed Internet
Parking Features: Detached, Carport
WaterSource: Public
Interior Features: Pantry
Patio And Porch Features: Covered, Patio
Cooling: Central Air

Call us now

Fees & Taxes

Tax Assessed Value: \$89,150 **Association Fee Frequency:** Monthly
Association Fee: \$498 **Tax Year:** 2025
Tax Annual Amount: \$2,782.62 **Association Fee Includes:** Water, Trash, Snow Removal,
Sewer, Lawn/Yard Care, Heat, Cable/Satellite

School Information

High School District: Pontiac

Miscellaneous

Road Surface Type: Paved **CrossStreet:** No of Square Lake E of Telegra
Listing Terms: Cash, FHA, Conventional

Call us now