

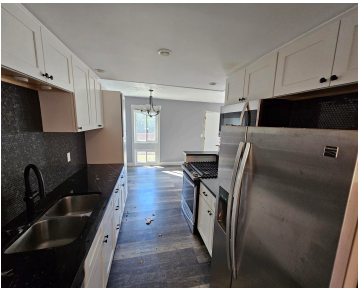
200, HERITAGE COMMONS, GRAND RAPIDS, MI, 49503

https://tuckerbenner.com

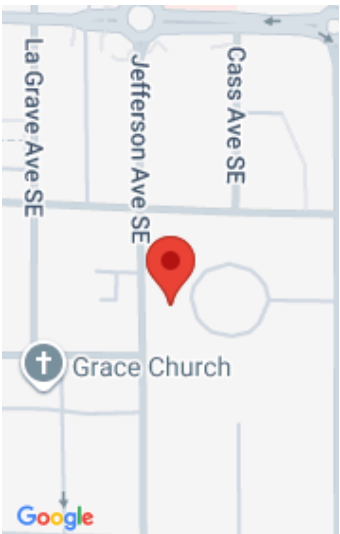


\$289,900

Private entry brick Townhouse/Condo on a tree-lined circle drive. Attached 1 car garage. Much larger than it appears from the outside.



- 2 beds
- 2 baths
- Condominium
- Residential
- Active
- 1302 sq ft



Call us now

Phone: (231)730-8781
Email: tuckerbennerteam@gmail.com
Address: 2747 Lakeshore Drive, Twin Lake, MI 49457

Basics

Category: Residential
Status: Active
Bathrooms: 2 baths
Lot size: 0.17 sq ft
Bathrooms Full: 1
Rooms Total: 5
Bathrooms Half: 1

Type: Condominium
Bedrooms: 2 beds
Area: 1302 sq ft
Year built: 1977
Lot Size Acres: 0.17 acres
County: Kent

Building Details

Building Area Total: 1302 sq ft
Sewer: Public
Stories: 2
Basement: Full

Construction Materials: Brick
Heating: Forced Air
Roof: Shingle

Amenities & Features

Laundry Features: In Basement
Utilities: Electricity Available, Natural Gas Connected
Fireplace Features: Den, Gas Log
WaterSource: Public
Window Features: Insulated Windows
Fireplaces Total: 1

Flooring: Carpet
Parking Features: Attached
Garage Spaces: 1
Lot Features: Level
Patio And Porch Features: Patio
Cooling: Central Air

Fees & Taxes

Call us now

Tax Assessed Value: \$119,464 **Association Fee Frequency:** Annually
Association Fee: \$200 **Tax Year:** 2025
Tax Annual Amount: \$6,278.37 **Association Fee Includes:** Snow Removal, Lawn/Yard Care

School Information

High School District: Grand Rapids

Miscellaneous

Road Surface Type: Paved **CrossStreet:** Lafayette
Listing Terms: Cash, Conventional

Call us now