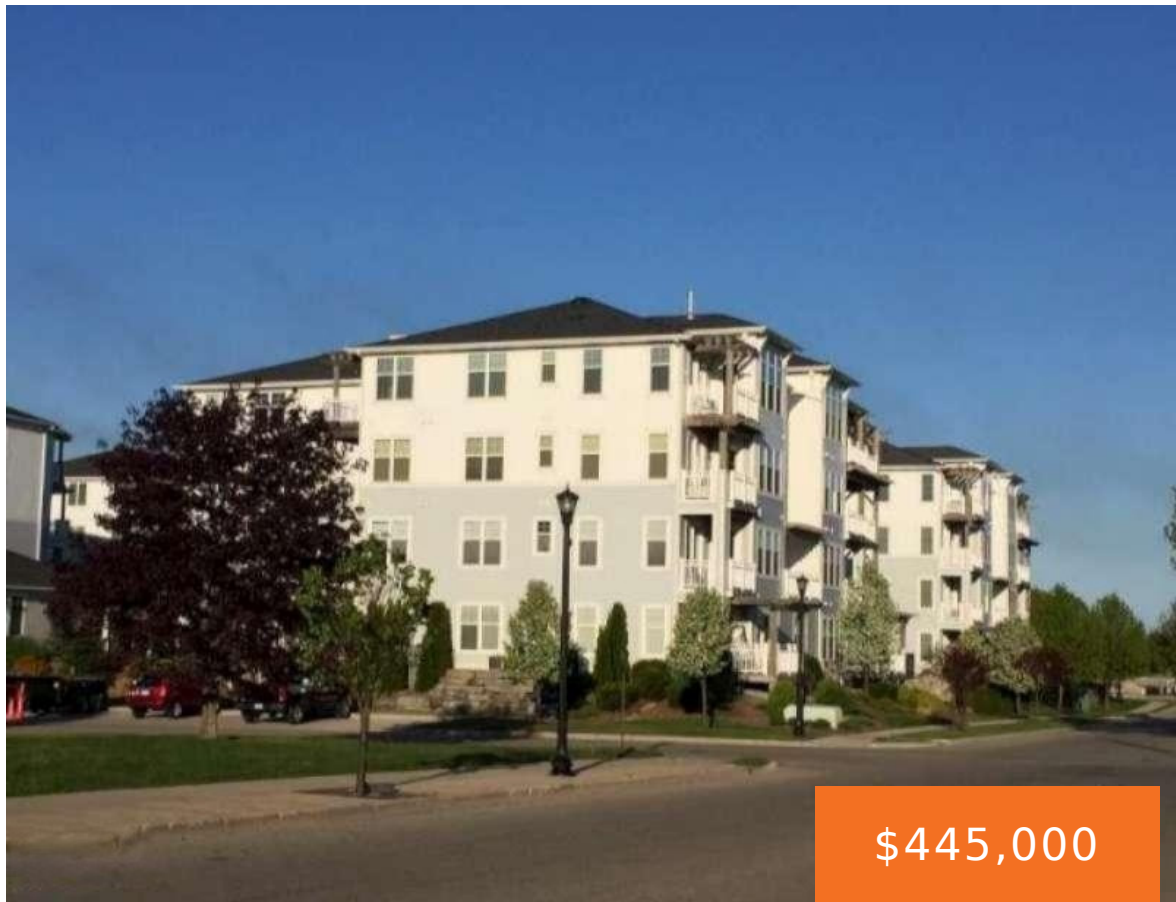


200, ROBERT, LUDINGTON, MI, 49431

https://tuckerbenner.com

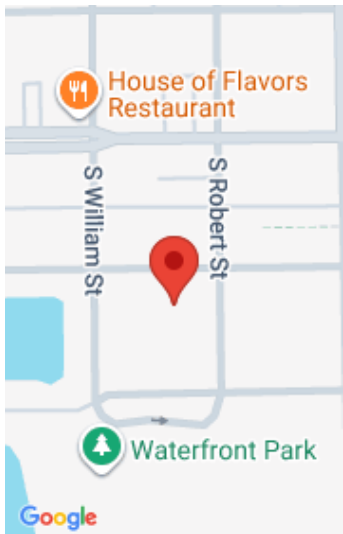


\$445,000

This welcoming 3rd floor corner unit is located in the heart of Downtown Ludington at One Ludington Place. Over 1400sf, well appointed and move in ready, this 3 bed/2 bath is tastefully designed and provides great flexibility! (second living space suitable for office, den or guestroom) Maple cabinetry and solid surfaces throughout; stainless steel appliances; [...]



- 3 beds
- 2 baths
- Condominium
- Residential
- Active
- 1416 sq ft



Call us now

Phone: (231)730-8781  
Email: tuckerbennerteam@gmail.com  
Address: 2747 Lakeshore Drive, Twin Lake, MI 49457

# Basics

**Category:** Residential

**Status:** Active

**Bathrooms:** 2 baths

**Year built:** 20

**Lot Size Acres:** 0 acres

**County:** Mason

**Type:** Condominium

**Bedrooms:** 3 beds

**Area:** 1416 sq ft

**Bathrooms Full:** 2

**Rooms Total:** 7

# Building Details

**Building Area Total:** 1416 sq ft

**Construction Materials:** Stone, Vinyl Siding

**Architectural Style:** Contemporary

**Sewer:** Public

**Heating:** Forced Air

**Stories:** 1

**Roof:** Composition

**Basement:** Other

# Amenities & Features

**Laundry Features:** Laundry Room, Main Level

**Flooring:** Ceramic Tile

**Association Amenities:** Cable TV, Clubhouse, Fitness Center, Pets Allowed, Pool, Security, Spa/Hot Tub, Storage

**Waterfront Features:** Lake

**Garage Spaces:** 1

**Appliances:** Dishwasher, Disposal, Dryer, Microwave, Range, Refrigerator, Washer

**Window Features:** Screens, Insulated Windows, Window Treatments

**Fireplaces Total:** 1

**Pool Features:** In Ground

**Utilities:** Natural Gas Connected, Cable Connected, High-Speed Internet

**Parking Features:** Garage Door Opener, Attached

**Fireplace Features:** Gas Log, Living Room

**WaterSource:** Public

**Interior Features:** Ceiling Fan(s), Elevator

**Patio And Porch Features:** Deck

**Cooling:** Central Air

Call us now

## Fees & Taxes

**Tax Assessed Value:** \$121,409

**Association Fee Frequency:** Monthly

**Association Fee:** \$625

**Tax Year:** 2025

**Tax Annual Amount:** \$7,195

**Association Fee Includes:** Other, Water, Trash, Snow Removal, Sewer, Lawn/Yard Care, Cable/Satellite

## School Information

**High School District:** Ludington

## Miscellaneous

**Road Surface Type:** Paved

**CrossStreet:** Loomis and Filer

**Listing Terms:** Cash, Conventional

Call us now