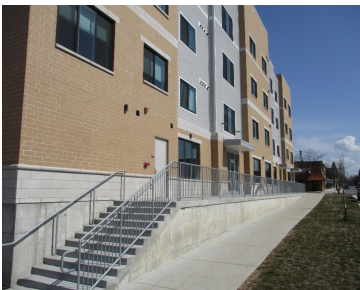


**200, LOOMIS, LUDINGTON, MI, 49431**  
<https://tuckerbenner.com>



Three separate Commercial/Retail/Office units newly available in the Ludington DDA. Currently unfinished. Available with 5-year lease with 5-year extension. Deposit of one month’s rent as damage deposit at signing of lease. Owner to provide a “white box” finish (drywall, ceilings, electrical, heating, fire suppression installed & allowance for flooring). Tenant to pay for customizing of [...]

- 0 baths
- Retail/Commercial
- Commercial Lease
- Active



---

## Basics

**Category:** Commercial Lease **Type:** Retail/Commercial

**Status:** Active

**Bathrooms:** 0 baths

**Lot size:** 0.58 sq ft

**Year built:** 2018

**Lot Size Acres:** 0.58 acres

**Business Type:** Professional Service, Professional/Office, Retail

**County:** Mason

---

## Building Details

**Building Area Total:** 4704 sq ft

**Construction Materials:** Other, Brick

**Sewer:** Public Sewer

**Heating:** Forced Air

**Building Features:** Bath Common Area, Fire Sprinkler

**Number Of Buildings:** 1

**Basement:** None

---

## Amenities & Features

**Utilities:** Telephone, Cable Connected, Public Water, Public Sewer, Broadband, Natural Gas Connected, Electricity Available, Natural Gas Available

**Parking Features:** Asphalt, Driveway

**WaterSource:** Public

**Fireplaces Total:** 1

**Cooling:** Central Air

---

## Fees & Taxes

**Tax Year:** 2020

---

## School Information

**Call us now**



Phone: (231)730-8781

Email: tuckerbennerteam@gmail.com

Address: 2747 Lakeshore Drive, Twin Lake, MI 49457



**High School District:** Ludington

**Miscellaneous**

**Road Surface Type:** Paved

**CrossStreet:** Rath & Robert

**Tenant Pays:** Electricity, Gas

**Call us now**