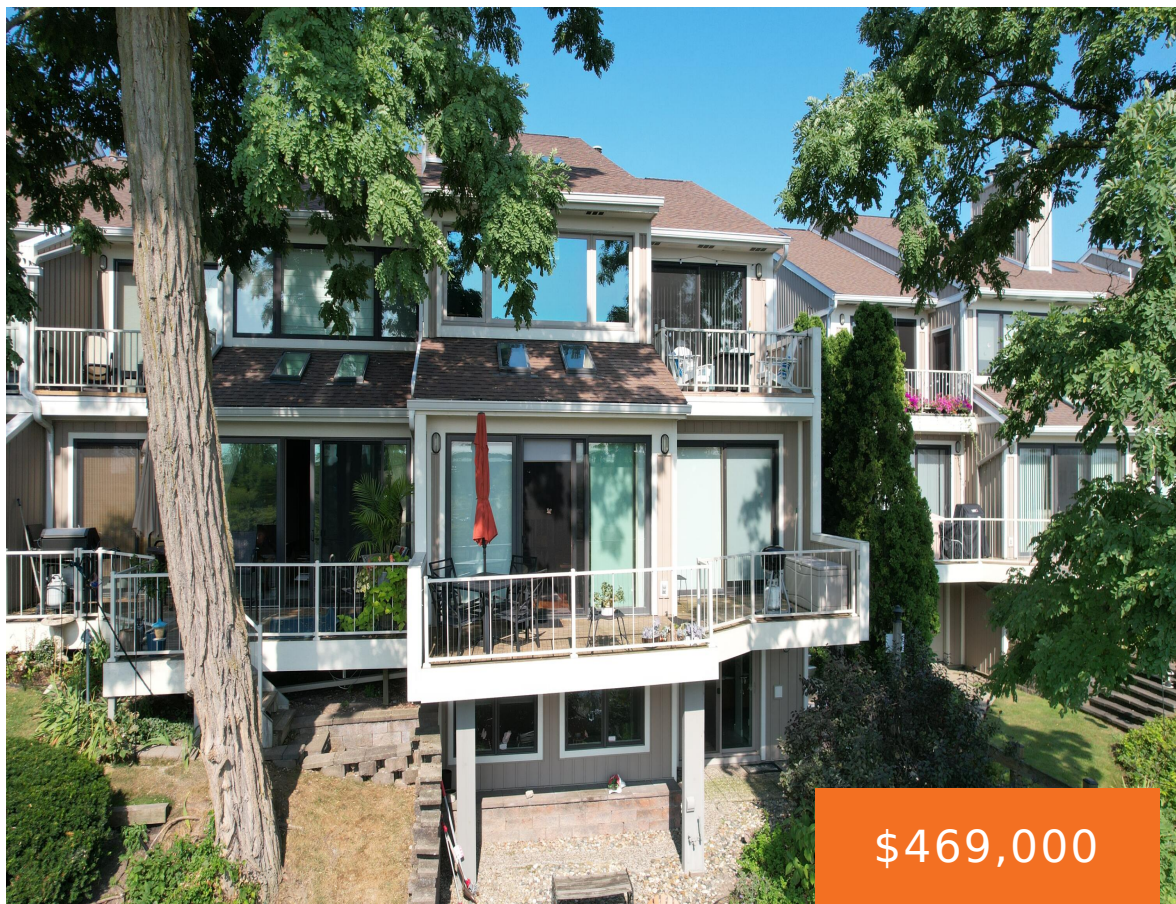


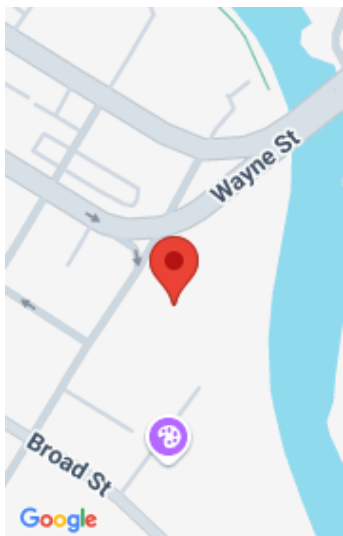
201, WAYNE, ST. JOSEPH, MI, 49085

https://tuckerbenner.com



Welcome to Channel Bluff Condominiums! This 3Br/2bath ground fl condo with 2 SIDE by SIDE Garages is sure to please with priceless views of the Morrison channel, convenient access to downtown St Joseph, and maintenance free living. Features a Primary En suite with stand up bath/shower, walk in closet, and private balcony. Enjoy open concept [...]

- 3 beds
- 2 baths
- Condominium
- Residential
- Active
- 1502 sq ft



Call us now

Phone: (231)730-8781  
Email: tuckerbennerteam@gmail.com  
Address: 2747 Lakeshore Drive, Twin Lake, MI 49457

# Basics

**Category:** Residential

**Status:** Active

**Bathrooms:** 2 baths

**Lot size:** 0.69 sq ft

**Bathrooms Full:** 2

**Rooms Total:** 6

**Type:** Condominium

**Bedrooms:** 3 beds

**Area:** 1502 sq ft

**Year built:** 1987

**Lot Size Acres:** 0.69 acres

**County:** Berrien

# Building Details

**Building Area Total:** 1502 sq ft

**Architectural Style:** Ranch

**Heating:** Forced Air

**Roof:** Asphalt, Shingle

**Construction Materials:** Wood Siding

**Sewer:** Public

**Stories:** 1

**Basement:** Slab

# Amenities & Features

**Laundry Features:** In Kitchen

**Utilities:** Cable Connected

**Waterfront Features:** River

**Garage Spaces:** 2

**Appliances:** Humidifier, Dishwasher, Disposal, Microwave, Oven, Range, Refrigerator

**Lot Features:** Sidewalk

**Patio And Porch Features:** Deck

**Cooling:** Central Air

**Flooring:** Ceramic Tile, Wood

**Parking Features:** Detached

**Fireplace Features:** Gas Log, Living Room

**WaterSource:** Public

**Interior Features:** Ceiling Fan(s), Garage Door Opener

**Window Features:** Insulated Windows, Window Treatments

**Fireplaces Total:** 1

# Fees & Taxes

Call us now



**Tax Assessed Value:** \$123,631

**Association Fee:** \$325

**Tax Annual Amount:** \$7,242

**Association Fee Frequency:** Monthly

**Tax Year:** 2024

**Association Fee Includes:** Trash, Snow Removal,  
Lawn/Yard Care

## School Information

**High School District:** St. Joseph

**Middle Or Junior School:** Upton Middle School

**HighSchool:** St. Joseph High School

**Elementary School:** Lincoln Elementary School

## Miscellaneous

**Road Surface Type:** Paved

**Listing Terms:** Cash, VA Loan, Conventional

**CrossStreet:** Ship St & Church

Call us now