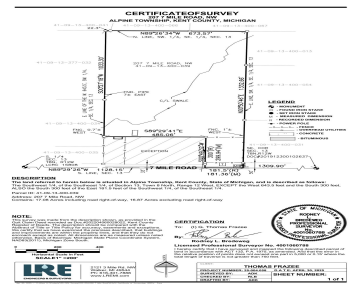


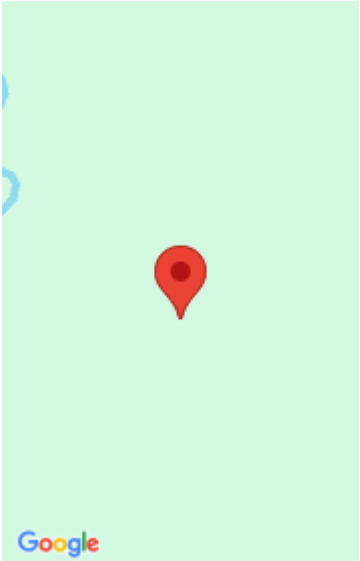
207, 7 MILE, COMSTOCK PARK, MI, 49321

<https://tuckerbenner.com>



Rare opportunity to own 17.08 acres in Alpine Township on 7 Mile Rd NW within the Kenowa Hills School District, conveniently located near Comstock Park and Sparta. This private, versatile parcel offers multiple building and development options. Approved access options include a driveway from the property frontage or a negotiable access point from 281 7 [...]

- 0 baths
- Acreage
- Land
- Active



Basics

Category: Land

Status: Active

Lot size: 17.4 sq ft

County: Kent

Type: Acreage

Bathrooms: 0 baths

Lot Size Acres: 17.4 acres

Building Details

Current Use: Residential

Amenities & Features

Utilities: Natural Gas Available, Electricity Available, Cable Available, Phone Available, None

WaterSource: Public

Lot Features: Level, Site Condo, Buildable, Building, Wooded

Fees & Taxes

Tax Assessed Value: \$26,488

Tax Year: 2025

Tax Annual Amount: \$794.05

School Information

High School District: Kenowa Hills

Miscellaneous

Call us now

CrossStreet: 7 Mile and North Division **Listing Terms:** Cash, 2nd Mortgage, Conventional

Call us now



Phone: (231)730-8781
Email: tuckerbennerteam@gmail.com
Address: 2747 Lakeshore Drive, Twin Lake, MI 49457

