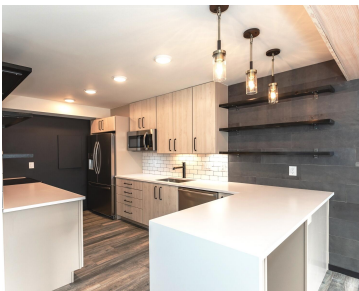


2124, PAULINE, ANN ARBOR, MI, 48103
https://tuckerbenner.com



Available Sept 1st. Sleek and modern 2 bedroom, 2 bath condo with master suite has been completely renovated with high end finishes throughout, 1175sft, ample storage space and gourmet kitchen with dishwasher, microwave and SS appliances. You will love the open concept with dining room and additional full island seating. Huge private balcony and assigned [...]

- 2 beds
- 2 baths
- Condominium
- Residential Lease
- Active
- 1173 sq ft



Call us now

Phone: (231)730-8781
Email: tuckerbennerteam@gmail.com
Address: 2747 Lakeshore Drive, Twin Lake, MI 49457

Basics

Category: Residential Lease

Status: Active

Bathrooms: 2 baths

Lot size: 0 sq ft

Subdivision Name: Walden Hills II Condo

Lot Size Acres: 0 acres

County: Washtenaw

Type: Condominium

Bedrooms: 2 beds

Area: 1173 sq ft

Year built: 1959

Bathrooms Full: 2

Rooms Total: 7

Building Details

Architectural Style: Ranch

Stories: 1

Heating: Forced Air

Amenities & Features

Laundry Features: Common Area, In Basement, Laundry Room, Lower Level

Garage Spaces: 1

Parking Features: Carport

Cooling: CeilingFan, Central Air

Fees & Taxes

Tax Year: 172

Association Fee Includes: Lawn/Yard Care, Sewer, Snow Removal, Trash, Water

School Information

Call us now

High School District: Ann Arbor

Middle Or Junior School: Slauson Middle School

HighSchool: Pioneer High School

Elementary School: Dicken Elementary School

Miscellaneous

CrossStreet: S Maple & Pauline

Owner Pays: Water

Tenant Pays: A/C, Cable/Satellite, Electric, Heat, Internet Access, WIFI

Call us now