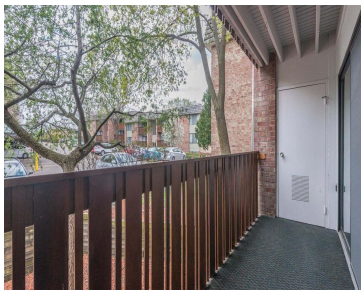
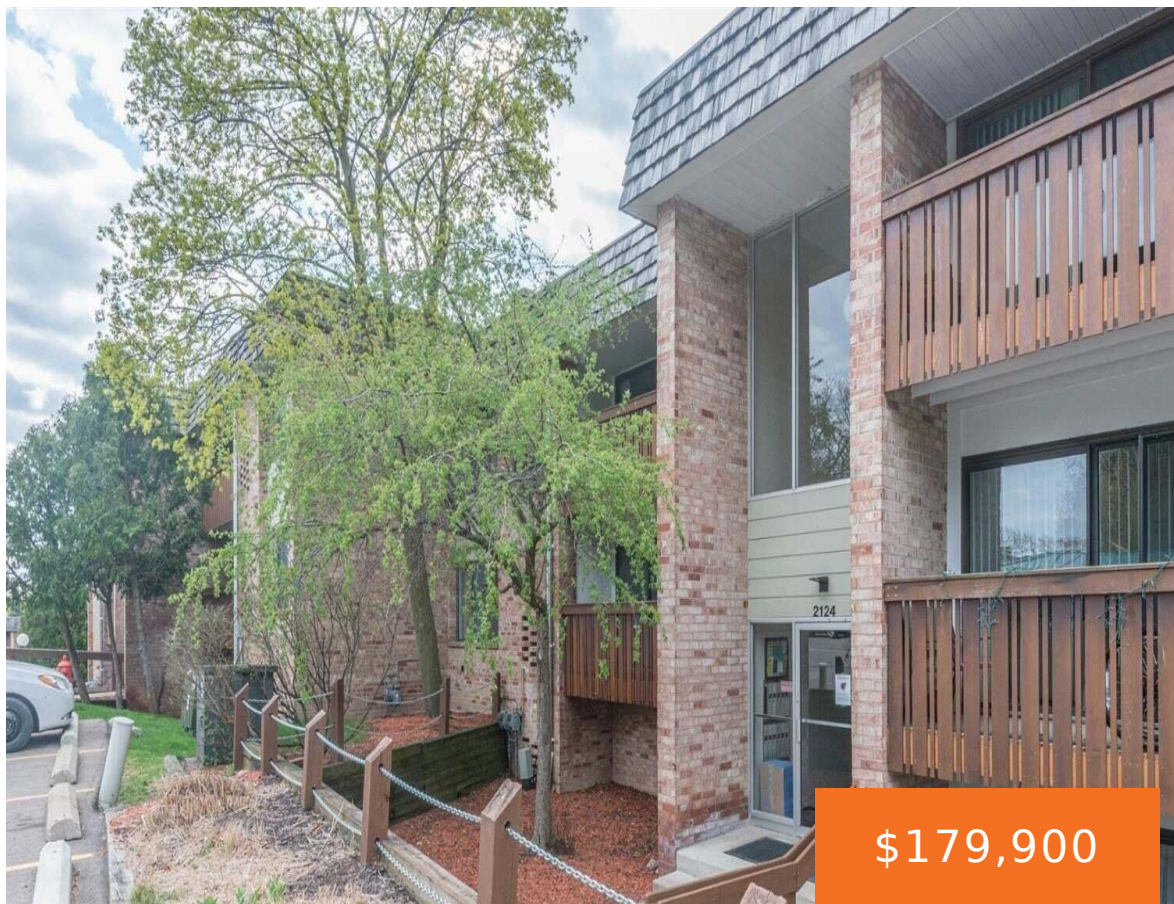
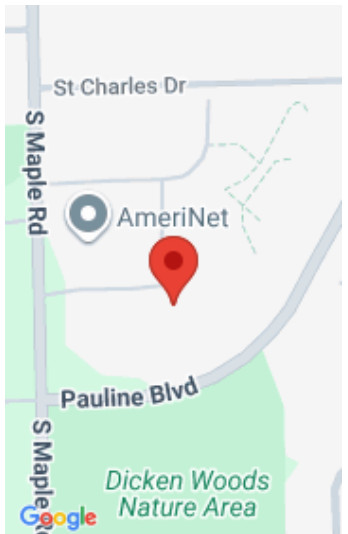


2124, PAULINE, ANN ARBOR, MI, 48103
<https://tuckerbenner.com>



Large one bedroom 2nd floor unit in popular Summit View. Easy access to downtown & central campus – directly on AATA bus routes. Brand new updates include luxury vinyl plank floors in living room, dining area & kitchen; new carpet in the huge bedroom & spacious walk-in closet; quartz counters in kitchen with new sink [...]

- 1 bed
- 1 bath
- Condominium
- Residential
- Active
- 927 sq ft



Call us now

Phone: (231)730-8781
Email: tuckerbennerteam@gmail.com
Address: 2747 Lakeshore Drive, Twin Lake, MI 49457



Basics

Category: Residential
Status: Active
Bathrooms: 1 bath
Lot size: 0.04 sq ft
Subdivision Name: Walden Hills II Condo
Lot Size Acres: 0.04 acres
County: Washtenaw

Type: Condominium
Bedrooms: 1 bed
Area: 927 sq ft
Year built: 1959
Bathrooms Full: 1
Rooms Total: 3

Building Details

Building Area Total: 927 sq ft
Architectural Style: Ranch
Heating: Forced Air

Construction Materials: Brick
Sewer: Public
Basement: Slab

Amenities & Features

Laundry Features: In Basement
Flooring: Carpet, Laminate, Vinyl

Association Amenities: Clubhouse, Fitness Center, Laundry, Meeting Room, Pool, Sauna, Storage
WaterSource: Public

Interior Features: Ceiling Fan(s), Eat-in Kitchen
Window Features: Window Treatments
Cooling: Central Air

Pool Features: Indoor
Utilities: Natural Gas Connected, Cable Connected, Storm Sewer
Parking Features: Carport

Appliances: Dishwasher, Disposal, Microwave, Oven, Range, Refrigerator
Lot Features: Sidewalk
Patio And Porch Features: Deck

Fees & Taxes

Call us now

Tax Assessed Value: \$82,500

Association Fee: \$490

Tax Annual Amount: \$5,856

Association Fee Frequency: Monthly

Tax Year: 2024

Association Fee Includes: Water, Trash, Snow Removal,
Lawn/Yard Care

School Information

High School District: Ann Arbor

Middle Or Junior School: Slauson Middle School

HighSchool: Pioneer High School

Elementary School: Dicken Elementary School

Miscellaneous

CrossStreet: Off Maple RD

Listing Terms: Cash, Conventional

Call us now