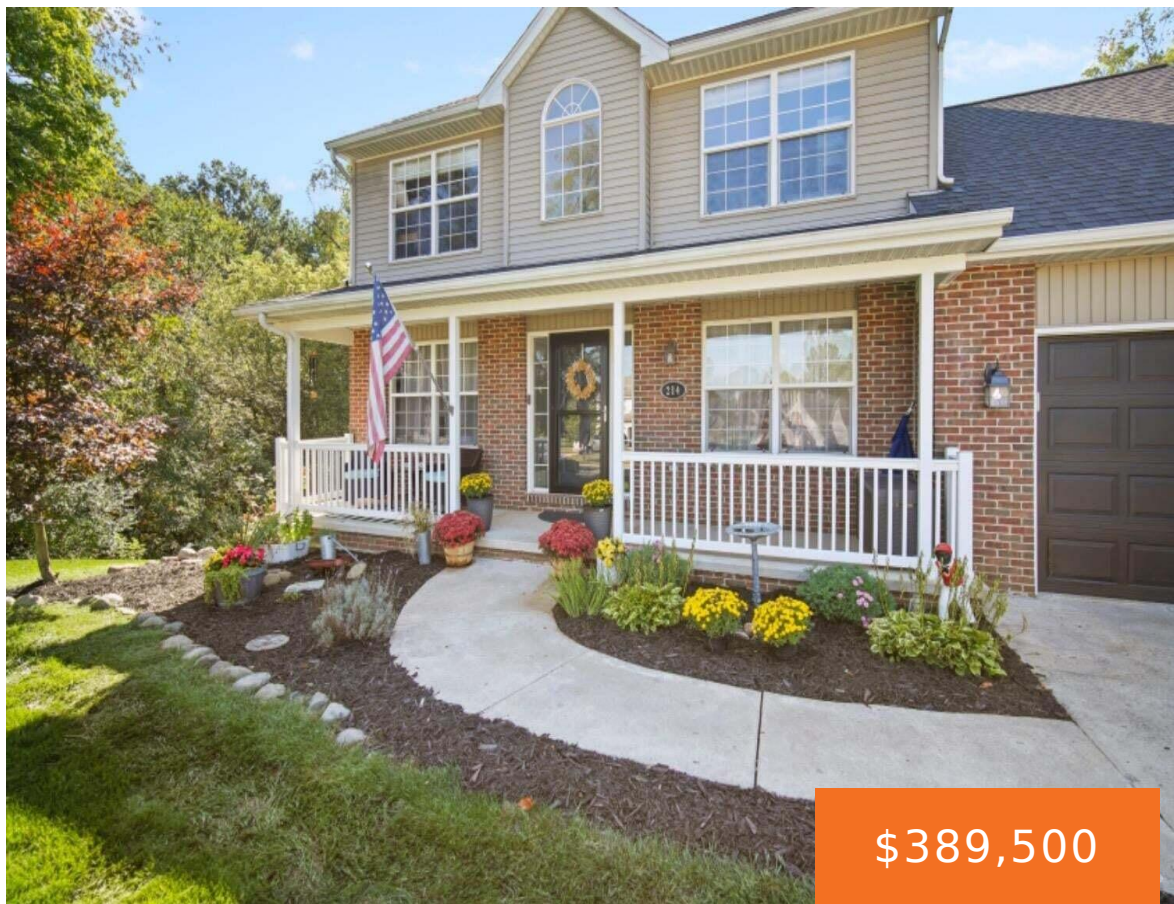


214, GLENWOOD, MANCHESTER, MI, 48158  
https://tuckerbenner.com

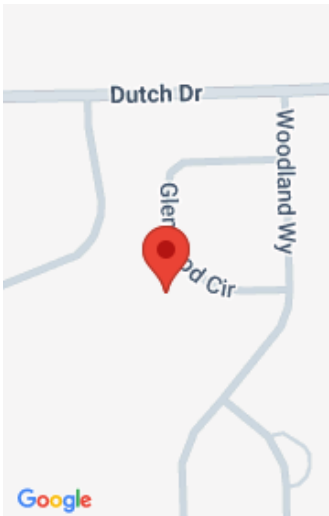


\$389,500



Welcome to this inviting 3-bedroom, 2.5-bath home located in a desirable neighborhood close to Manchester Schools. Designed with comfort and convenience in mind, this home offers a spacious, well-thought-out layout perfect for everyday living and entertaining. As you enter, you're greeted by a warm and welcoming atmosphere. The living room and dining area flow seamlessly [...]

- 3 beds
- 3 baths
- Single Family Residence
- Residential
- Active
- 2350 sq ft



Call us now

Phone: (231)730-8781  
Email: tuckerbennerteam@gmail.com  
Address: 2747 Lakeshore Drive, Twin Lake, MI 49457

# Basics

<b>Category:</b> Residential	<b>Type:</b> Single Family Residence
<b>Status:</b> Active	<b>Bedrooms:</b> 3 beds
<b>Bathrooms:</b> 3 baths	<b>Area:</b> 2350 sq ft
<b>Lot size:</b> 0.31 sq ft	<b>Year built:</b> 2003
<b>Bathrooms Full:</b> 2	<b>Lot Size Acres:</b> 0.31 acres
<b>Rooms Total:</b> 9	<b>County:</b> Washtenaw
<b>Bathrooms Half:</b> 1	

# Building Details

<b>Building Area Total:</b> 1750 sq ft	<b>Construction Materials:</b> Brick, Vinyl Siding
<b>Architectural Style:</b> Colonial	<b>Sewer:</b> Public
<b>Heating:</b> Forced Air	<b>Stories:</b> 2
<b>Basement:</b> Full, Walk-Out Access	

# Amenities & Features

<b>Laundry Features:</b> Main Level	<b>Flooring:</b> Carpet, Ceramic Tile, Laminate, Tile
<b>Utilities:</b> Cable Available	<b>Parking Features:</b> Attached
<b>Fireplace Features:</b> Gas Log	<b>Garage Spaces:</b> 2
<b>WaterSource:</b> Public	<b>Appliances:</b> Dishwasher, Microwave, Water Softener Owned
<b>Interior Features:</b> Ceiling Fan(s), Broadband, Garage Door Opener, Eat-in Kitchen	<b>Patio And Porch Features:</b> Deck, Patio, Porch(es)
<b>Exterior Features:</b> Balcony	<b>Fireplaces Total:</b> 1
<b>Cooling:</b> Central Air	

# Fees & Taxes

Call us now

**Tax Assessed Value:** \$108,954

**Association Fee:** \$150

**Tax Annual Amount:** \$4,948

**Association Fee Frequency:** Annually

**Tax Year:** 2025

**Association Fee Includes:** None

## School Information

**High School District:** Manchester

## Miscellaneous

**CrossStreet:** Dutch dr

**Listing Terms:** Cash, Conventional

**Call us now**