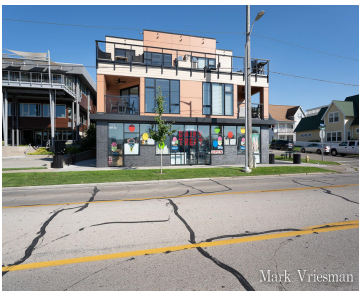


218, HARBOR, GRAND HAVEN, MI, 49417

<https://tuckerbenner.com>



Set along Harbor Drive, this exceptional 2, possibly 3-bedroom, 2-bath waterfront condo offers a front-row seat to all that Grand Haven has to offer, with captivating northwest views facing the Musical Fountain and fireworks. Professionally decorated and thoughtfully designed, the residence features custom craftsmanship throughout, including custom cabinetry, a built-in coffee maker, and a striking [...]

- 3 beds
- 2 baths
- Condominium
- Residential
- Active
- 1641 sq ft



Call us now

Phone: (231)730-8781
Email: tuckerbennerteam@gmail.com
Address: 2747 Lakeshore Drive, Twin Lake, MI 49457



Basics

Category: Residential

Status: Active

Bathrooms: 2 baths

Lot size: 0.14 sq ft

Bathrooms Full: 2

Rooms Total: 8

Type: Condominium

Bedrooms: 3 beds

Area: 1641 sq ft

Year built: 2020

Lot Size Acres: 0.14 acres

County: Ottawa

Building Details

Building Area Total: 1641 sq ft

Construction Materials: HardiPlank Type

Architectural Style: Contemporary

Sewer: Public

Heating: Forced Air, Radiant

Stories: 1

Basement: Other

Amenities & Features

Laundry Features: In Unit

Parking Features: Garage Door Opener, Attached

Waterfront Features: Channel

Garage Spaces: 1

WaterSource: Public

Appliances: Bar Fridge, Dishwasher, Disposal, Dryer, Microwave, Oven, Range

Interior Features: Center Island

Lot Features: Corner Lot

Exterior Features: Balcony

Cooling: Central Air

Fees & Taxes

Call us now



Tax Assessed Value: \$550,200

Association Fee: \$225

Tax Annual Amount: \$19,500

Association Fee Frequency: Monthly

Tax Year: 2025

Association Fee Includes: Water, Trash, Snow Removal,
Sewer, Lawn/Yard Care

School Information

High School District: Grand Haven

Miscellaneous

CrossStreet: Lafayette and Clinton

Listing Terms: Cash, Conventional

Call us now