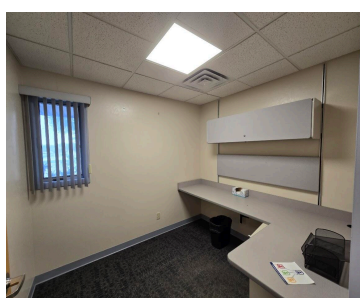
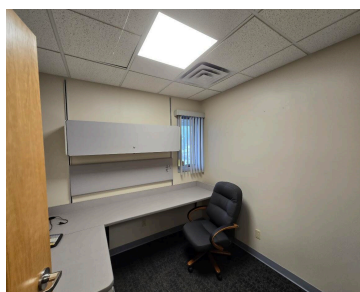


# 219, CHURCH, REED CITY, MI, 49677

<https://tuckerbenner.com>



**\$389,900**



This 9000 square foot commercial building boasts 4 seperate entrances, 4 restrooms, 4 conference rooms, several dedicated offices, a bullpen area, a loading dock area in the back along with a detached storage garage and over 75 dedicated parking spaces. The possibilities are endless here!!

- 8 baths
- Office
- Commercial Sale
- Active



## Basics

**Category:** Commercial Sale

**Status:** Active

**Lot size:** 0.41 sq ft

**Bathrooms Full:** 8

**Business Type:** Professional/Office

**Type:** Office

**Bathrooms:** 8 baths

**Year built:** 1994

**Lot Size Acres:** 0.41 acres

**County:** Osceola

## Call us now



Phone: (231)730-8781  
 Email: [tuckerbennerteam@gmail.com](mailto:tuckerbennerteam@gmail.com)  
 Address: 2747 Lakeshore Drive, Twin Lake, MI 49457



---

## Building Details

**Building Area Total:** 9000 sq ft

**Construction Materials:** Brick

**StoriesTotal:** 1

**Number Of Buildings:** 1

**Number Of Units Total:** 1

**Heating:** Forced Air

**Roof:** Rubber

---

## Amenities & Features

**Parking Total:** 75

**Utilities:** Phone Available, Natural Gas Available, Electricity Available, Cable Available, Phone Connected, Natural Gas Connected, Electricity Connected, Storm Sewer

**Cooling:** Central Air

**Inclusions:** Real Estate

**Interior Features:**  
Broadband

---

## Fees & Taxes

**Tax Year:** 2025

---

## School Information

**High School District:** Reed City

---

## Miscellaneous

**CrossStreet:** Mill

**Listing Terms:** Conventional, Cash

### Call us now



Phone: (231)730-8781

Email: tuckerbennerteam@gmail.com

Address: 2747 Lakeshore Drive, Twin Lake, MI 49457

