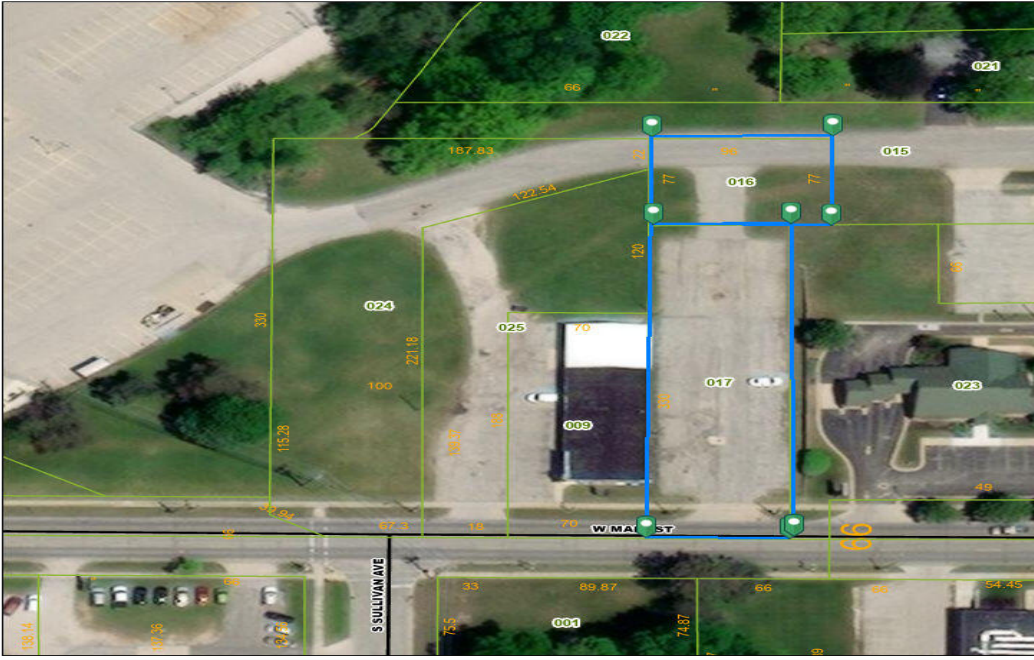


219, MAIN, FREMONT, MI, 49412

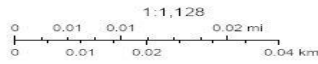
https://tuckerbenner.com

Newaygo County



8/20/2024, 7:36:23 PM

Roads
Present



Source: Esri, Maxar, Earthstar Geographics, and the GIS User Community

Newaygo County GIS Photo Map Viewer
2023 Newaygo County

\$100,000



Prime commercial lot available on Main Street in Fremont, Michigan! This centrally located property, offered directly by the city, presents a rare opportunity for investors or business owners to establish a presence in the heart of Fremont. The lot boasts excellent visibility and high traffic, making it ideal for retail, office space, or mixed-use development. [...]

- 0 baths
- Commercial Land
- Land
- Active



Basics

Category: Land

Status: Active

Lot size: 0.55 sq ft

County: Newaygo

Type: Commercial Land

Bathrooms: 0 baths

Lot Size Acres: 0.55 acres



Call us now

Phone: (231)730-8781
Email: tuckerbennerteam@gmail.com
Address: 2747 Lakeshore Drive, Twin Lake, MI 49457



Amenities & Features

Utilities: Phone Available, Storm Sewer, Water Available, Sewer Available, Natural Gas Available, Electricity Available, Cable Available, None

Lot Features:
Level

School Information

High School District: Fremont

Miscellaneous

Road Surface Type: Paved

CrossStreet: N Weaver & Gibson Ave

Listing Terms: Cash, Conventional



Call us now

Phone: (231)730-8781

Email: tuckerbennerteam@gmail.com

Address: 2747 Lakeshore Drive, Twin Lake, MI 49457

