

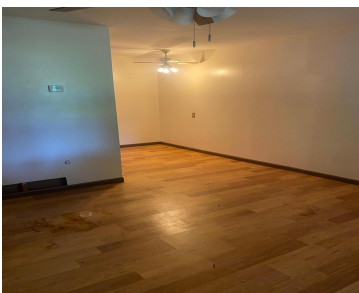
2193, MELVIN, WYOMING, MI, 49519

https://tuckerbenner.com



\$129,900

Pleasant condo-community/neighborhood. Potentially cute 1 bedroom condo w/main floor laundry and 1 stall garage. Small patio area off bedroom. Unit needs work, priced accordingly. Monthly HOA of \$260 includes water, gas, trash, exterior maintenance.



- 1 bed
- 1 bath
- Condominium
- Residential
- Active
- 561 sq ft



Call us now

Phone: (231)730-8781
Email: tuckerbennerteam@gmail.com
Address: 2747 Lakeshore Drive, Twin Lake, MI 49457

Basics

Category: Residential

Status: Active

Bathrooms: 1 bath

Lot size: 0 sq ft

Bathrooms Full: 1

Rooms Total: 4

Type: Condominium

Bedrooms: 1 bed

Area: 561 sq ft

Year built: 1975

Lot Size Acres: 0 acres

County: Kent

Building Details

Building Area Total: 561 sq ft

Architectural Style: Ranch

Heating: Forced Air

Roof: Asphalt

Construction Materials: Brick, Vinyl Siding

Sewer: Public

Stories: 1

Basement: Crawl Space

Amenities & Features

Laundry Features: Laundry Closet

Parking Features: Garage Faces Side

WaterSource: Public

Flooring: Laminate

Garage Spaces: 1

Exterior Features: Other

Fees & Taxes

Tax Assessed Value: \$31,993

Association Fee Frequency: Monthly

Association Fee: \$260

Tax Year: 2025

Tax Annual Amount: \$1,315

Association Fee Includes: Water, Trash, Snow Removal, Sewer, Lawn/Yard Care, Heat

Call us now

School Information

High School District: Wyoming

Miscellaneous

Road Surface Type: Paved

CrossStreet: Collingwood + Oregon

Listing Terms: Cash, Conventional

Call us now