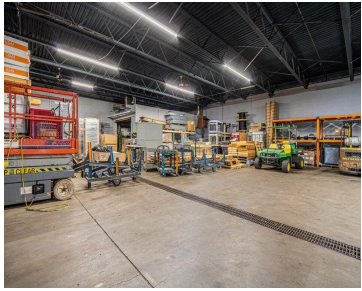


2202, PLAZA, BENTON HARBOR, MI, 49022

<https://tuckerbenner.com>



\$425,000



Prime 6,000 sq ft light-industrial/flex building on nearly 1 acre in Plaza Drive commercial corridor. Features 4800 sq ft warehouse/shop area, 10x10 overhead door, large fenced storage yard, and parking for 30+ vehicles. Zoned Light Industrial — ideal for manufacturing, distribution, auto services, storage etc.. Excellent I-94 access and high visibility. Great investment or business [...]

- 3 baths
- Industrial
- Commercial Sale
- Active



Basics

Call us now



Phone: (231)730-8781
Email: tuckerbennerteam@gmail.com
Address: 2747 Lakeshore Drive, Twin Lake, MI 49457



Category: Commercial Sale

Status: Active

Lot size: 1 sq ft

Bathrooms Full: 3

Business Type: Other, Auto Service, Professional/Office, Professional Service, Distribution, Storage, Retail, Recreation, Manufacturing, Institutional

Type: Industrial

Bathrooms: 3 baths

Year built: 1968

Lot Size Acres: 1 acres

County: Berrien

Building Details

Building Area Total: 4800 sq ft

Construction Materials: Block, Brick, Metal Siding

Stories Total: 1

Foundation Details: Block

Number Of Units Total: 2

Heating: Forced Air

Building Features: Barrier Free, Fenced Storage, Outdoor Storage

Number Of Buildings: 1

Amenities & Features

Parking Total: 40

Utilities: Phone Available, Natural Gas Available, Electricity Available, Cable Available, Electricity Connected, Storm Sewer

Cooling: Central Air

Inclusions: Real Estate

Interior Features: Broadband

Fees & Taxes

Tax Assessed Value: \$67,816

Tax Annual Amount: \$3,458

Tax Year: 2025

School Information

Call us now



Phone: (231)730-8781

Email: tuckerbennerteam@gmail.com

Address: 2747 Lakeshore Drive, Twin Lake, MI 49457



High School District: Benton Harbor

Miscellaneous

Road Surface Type: Paved

CrossStreet: Between Nickerson and Mall Dr

Listing Terms: Other, Contract, Cash

Call us now



Phone: (231)730-8781

Email: tuckerbennerteam@gmail.com

Address: 2747 Lakeshore Drive, Twin Lake, MI 49457

